

Notation Revision Sheet

PITCH

Use 'Every Green
Bus Drives Fast

and F A C E BUT ... remember it's just a 7 letter alphabet

LEDGER LINES

Going above or below the staff? Just keep your alphabet going.
But always alternate line, space, line, space.
And obviously going down in pitch means GFEDCBAGF...

SHARPS & FLATS

Keep 'accidentals' (sharps, flats, naturals)
before and level with the noteheads

= 1/2 note higher
b (flat) = 1/2 note lower
Natural = back to normal

STEMS

Stems up on Right
of the note head (blob)

BASS CLEF

All cows eat grass = spaces

NOTE VALUES

Here are the main note values

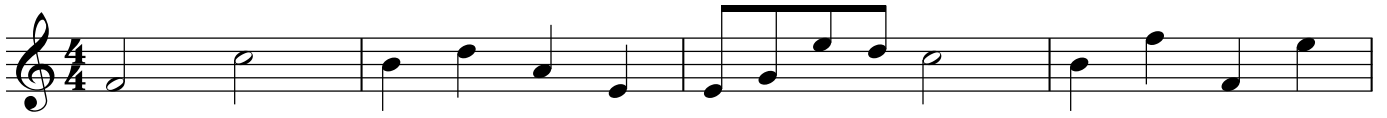
TIME SIGNATURE

Top number = how many beats per bar. Bottom number = which type of beat (4=crotchet beat / 8=quaver beat)

Quick Review Exercises

Don't just read the info try it out for yourself!

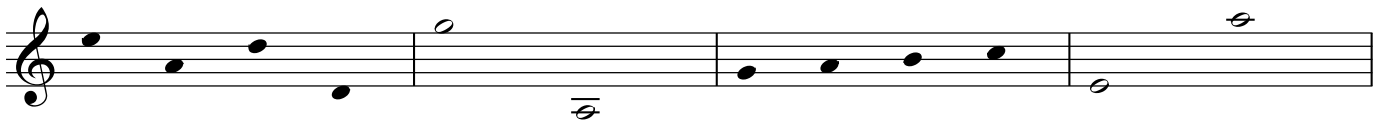
Name these pitches with letters - check them with the revision sheet afterwards



Now name some with ledger lines



Draw correct stems on these noteheads



Write values under these notes in numbers (beats)



Make up 2 bars using each of the different time signatures. Use different note lengths

