

# Notation Revision Sheet

## PITCH

Use 'Every Green  
Bus Drives Fast

and F A C E BUT ... remember it's just a 7 letter alphabet ....

E G B D F F A C E E F G A B C D E F G

## LEDGER LINES

## SHARPS & FLATS

Going above or below the staff? Just keep your alphabet going.  
But always alternate line, space, line, space.  
And obviously going down in pitch means GFEDCBAGF...

Keep 'accidentals' (sharps, flats, naturals)  
before and level with the noteheads

# = 1/2 note higher  
b (flat) = 1/2 note lower  
Natural = back to normal

E F G A B C E D C B A C# F# Ab Bb B A

## STEMS

Stems up on Right of the note head (blob)  
Down on Left

Below middle line = up stem

Above middle line = down stem

Middle = either way

## NOTE VALUES

Here are the main note values

semibreve minims crotchets quavers dotted crotchet dotted minim

4 2 2 1 1 1 1 Halves 1.5 3

## TIME SIGNATURE

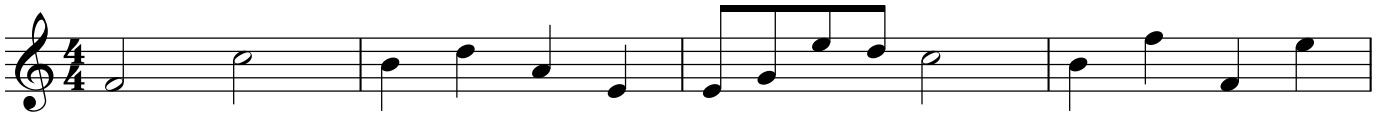
Top number = how many beats per bar. Bottom number = which type of beat (4=crotchet beat / 8=quaver beat)

4/4 time = 4 crotchet beats per bar. 3/4 = 3 crotchet beats etc .... But 6/8 = 6 quaver beats

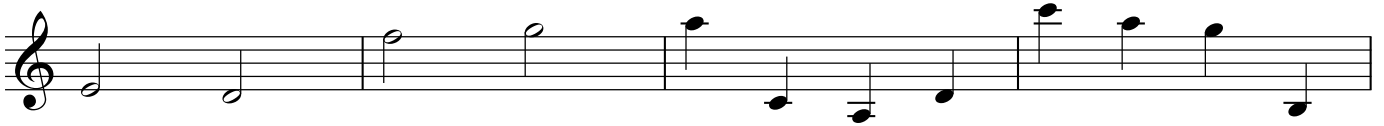
# Quick Review Exercises

Don't just read the info ..... try it out for yourself!

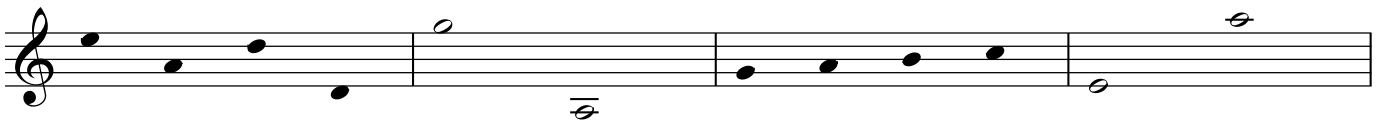
Name these pitches with letters - check them with the revision sheet afterwards



Now name some with ledger lines



Draw correct stems on these noteheads



Write values under these notes in numbers (beats)



Make up 2 bars using each of the different time signatures. Use different note lengths

