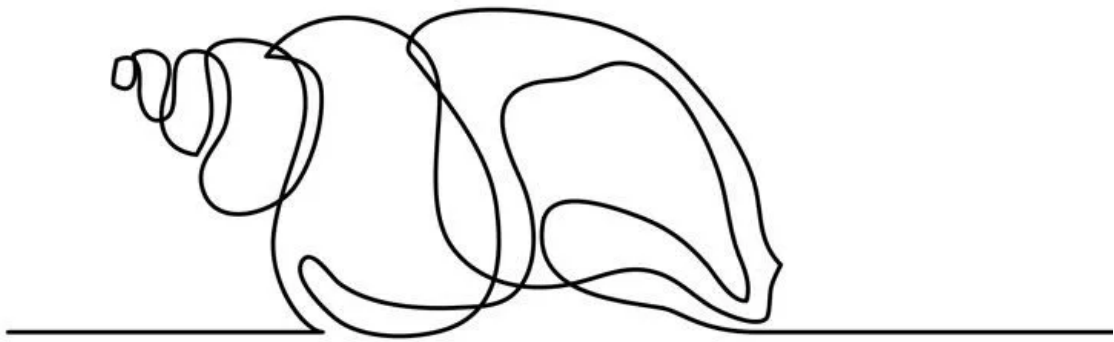


Introduction to Drawing

The Formal elements of art and design



Name_____

Form_____

Teacher_____

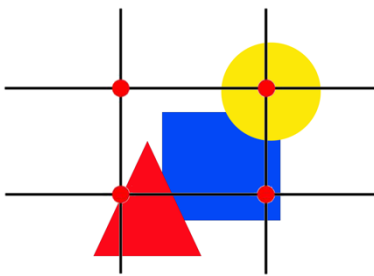
Homework hand in

day_____

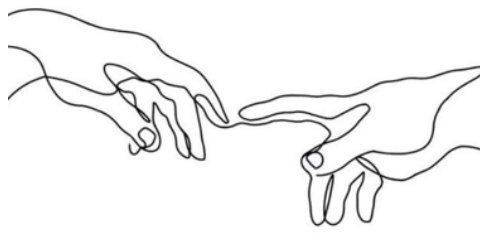
Year 7 Unit 1

The Formal Elements in Art

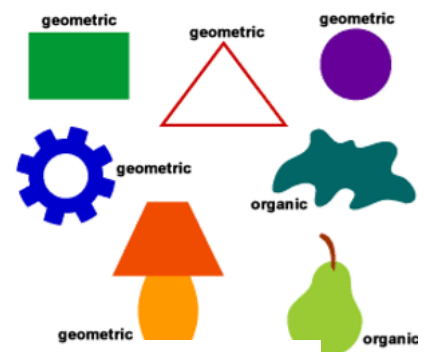
The Formal Elements are the parts used to make a piece of artwork. The art elements are line, shape, space, form, tone, texture, pattern, colour and composition. They are often used together, and how they are organised in a piece of art determines what the finished piece will look like. Artists consider each of the formal elements carefully when making their artwork.



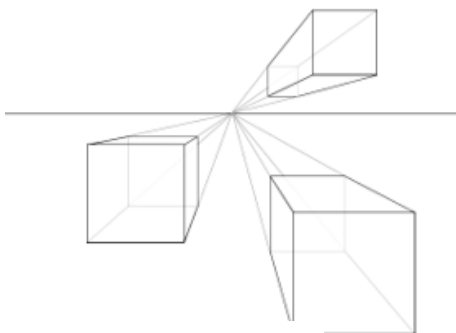
COMPOSITION



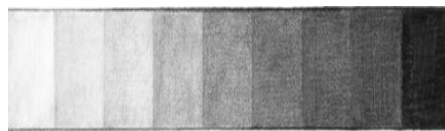
LINE



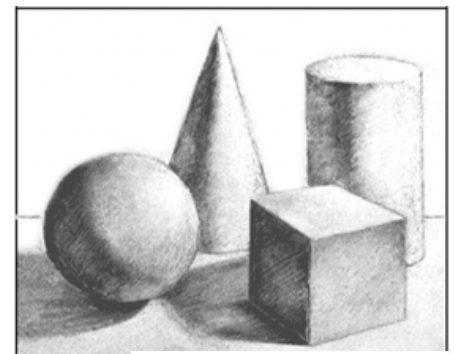
SHAPE



SPACE



TONE



FORM



TEXTURE



COLOUR



PATTERN

HOMEWORK 1

Line

Line is the path left by a moving point. For example, a pencil or a brush dipped in paint.

A line can take many forms. It can be horizontal, diagonal or curved. It can also change over its length, starting off curved and ending up horizontal, for example.

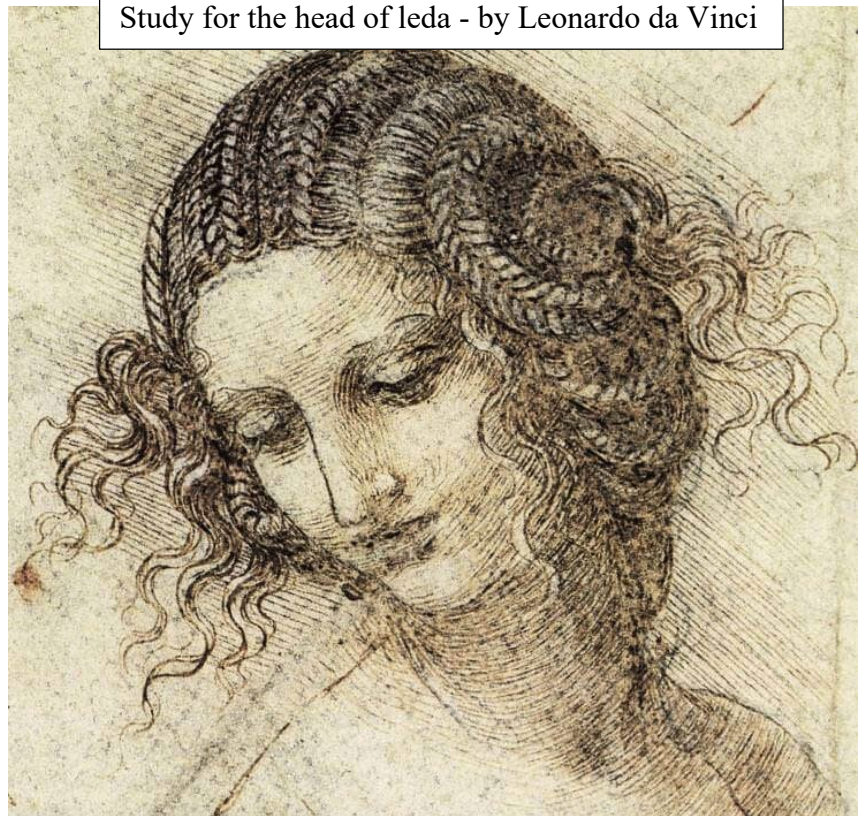
Line can be used to show many different qualities, such as:

- contours – showing the shape and form of something
- feelings or expressions – a short, hard line gives a different feeling to a more flowing one
- movements

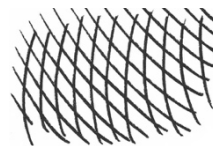
When analysing artwork, we look at the artist's use of the formal elements and the 'quality' of line used.

Leonardo da Vinci is famous for his many drawings of the human form, animals, nature and inventions. Look how the artist has used different qualities of line to describe this figure. He uses curved hatching lines that follow the form of the face showing the contours, and cross hatching to make darker areas of shadow. The figure's hair has more expressive, soft, loose lines in addition to further detailed, directional hatching lines within the plaits.

Study for the head of Leda - by Leonardo da Vinci



HATCHING



CROSS HATCHING



EXPRESSIVE

HATCHING

CROSS HATCHING

Continuous Line Drawing



Definition: A continuous line drawing is produced without ever lifting the drawing instrument from the page. This means that, in addition to outlines and internal shapes, the pencil must move back and forth across the surface of the paper, with lines doubling back on each other, so that the drawing is one free-flowing, unbroken line. This drawing method develops confidence

and drawing speed and encourages your eyes and hand and brain to work together. Continuous line drawings work best with in-depth observation of your subject, without interference from your thinking mind.

The Formal Elements – Line

Answer the following questions:

1. Name the 9 formal elements of art

_____(9)

2. The definition of Line is 'a path left by a moving_____'.
(1)

3. Which kind of line shows the shape and form of something?

_____(1)

4. In addition to feelings and expressions, what else can lines show?

____(1)

5. Which artist is famous for his many drawings of the human form, animals, nature and inventions?

-

____(1)

6. Which 3 types of line has da Vinci used in his drawing of Leda?

____(3)

7. In the space below, create a continuous line drawing of a person or object. You must draw directly from the subject in front of you, not

A large empty rectangular box with a thin black border, intended for a continuous line drawing.

from a photograph or tutorial. Remember, you cannot take your pen/pencil off the paper until you have finished the drawing! (4)

My score /20

20-17 = Excellent 16-14 = Good 13-10 = Inconsistent 9-0 = Poor

Homework 2

Shape and Form

Shape and form define objects in space. Shapes have two dimensions—height and width—and are usually defined by lines. Forms exist in three dimensions, with height, width, and depth.

Shape

A shape is created when a line is enclosed. It could just be an outline or a flat area of shade or colour.

Shapes have only height and width and are therefore two dimensional (2D).

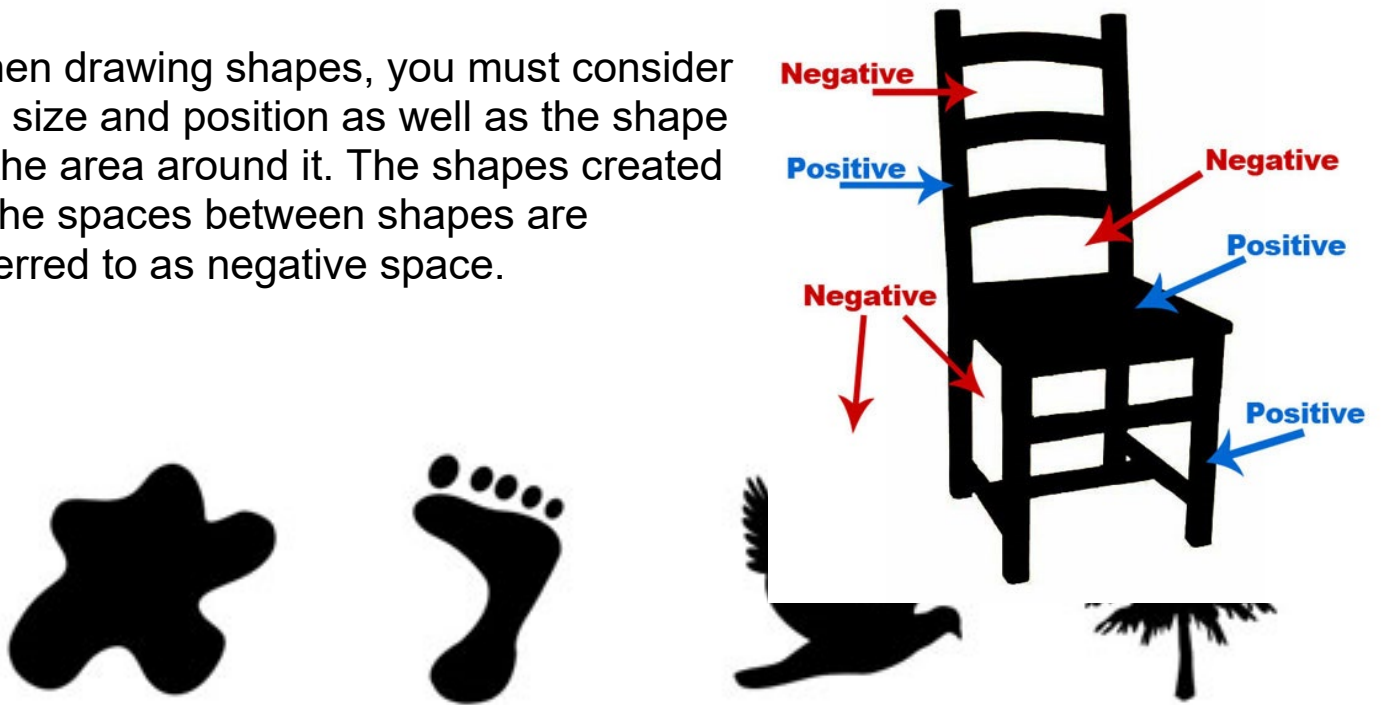
There are two main kinds of shapes, geometric (mathematical like a square or triangle) and organic (irregular).

Geometric shapes are mathematical shapes. They are perfect and regular. They are characterised by straight lines, angles and points. ... Artists will sometimes use geometric shapes in their artwork to suggest balance and order or to highlight that something is man-made or artificial.



Organic shapes are shapes that seem to follow no rules. Organic shapes generally do not have a name associated with them and are typically not man-made.

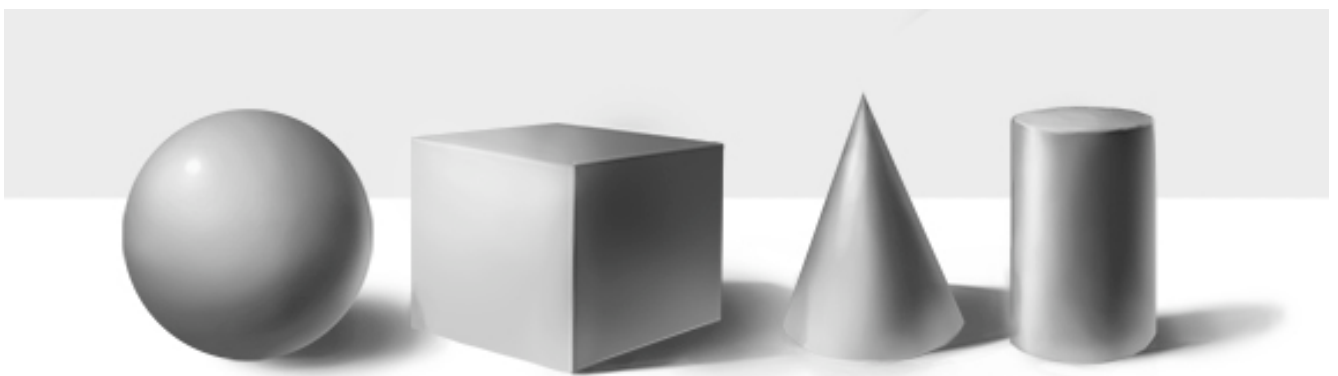
When drawing shapes, you must consider the size and position as well as the shape of the area around it. The shapes created in the spaces between shapes are referred to as negative space.



Form

Form refers to three dimensional objects (3D). While shapes have two dimensions (height and width), forms have three dimensions (height, width and depth).

As with shape, forms can be both geometric and organic.



Form and *Shape* are related. You can turn a shape into the illusion of form by using contour lines or adding tone, and you can simplify a form from life into a shape. When drawing representationally, the goal is to create the illusion of form. We can create the illusion of form by understanding how light reacts on the object.



Shape and Form

Answer the following questions:

1. Which is two-dimensional, a shape or a form?

2. Shapes only have height and width, forms have height, width and...?

3. Mathematical shapes such as triangles and circles are known as?

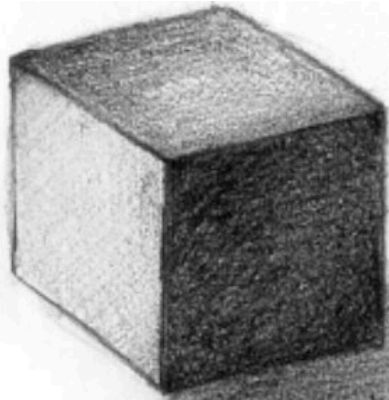
4. An irregular shape such as a leaf would be classed as what kind of shape?

5. What are the shapes created in between shapes referred to?

6. We can create the illusion of form by using contour lines or adding...?

7. What kind of form would a sphere be? Geometric or organic?

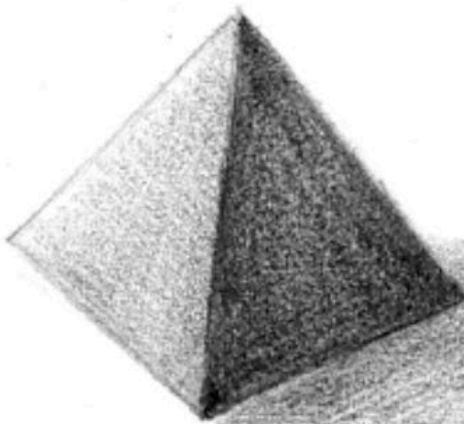
8. Draw and shade each of these shapes using the side of your pencil to turn them from shapes into forms (3).



Cube



Sphere



Pyramid

10-9 = Excellent

My score
8-7 = Good

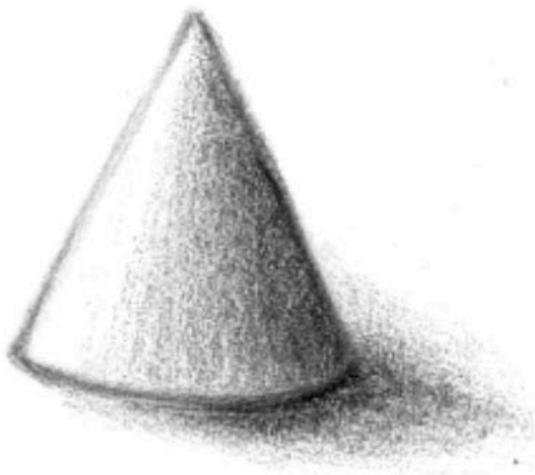
/10
6-5 = Inconsistent

4-0 = Poor

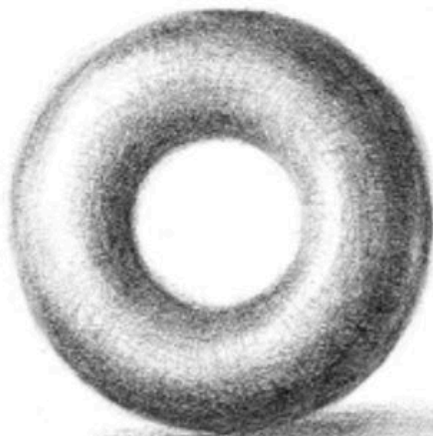
EXTENSION TASK – Love drawing or want to become better? Try these for more practise



Cylinder



Cone



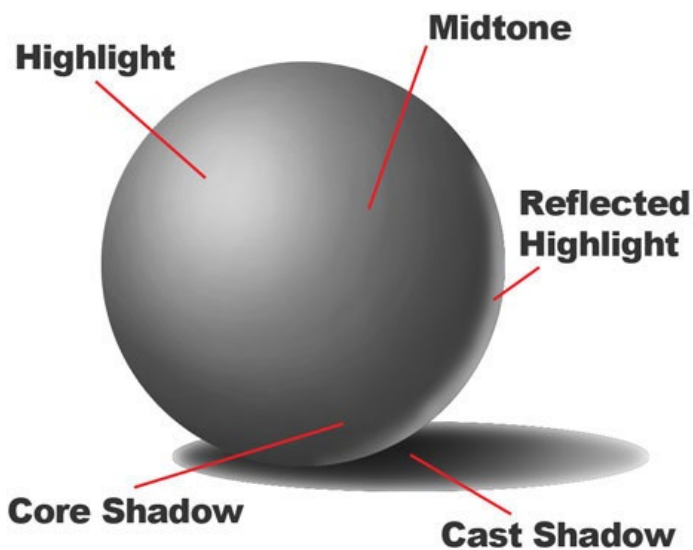
Torus

Homework 3

Tone

Tone means how light or dark something is. The tones artists and designers use and the contrast between them can create very different moods and visual effects.

In art and design, tone refers to how light or dark something is. Tones could refer to black, white and the grey tones between. It could refer to how light or dark a colour appears.



In real life tone is created by the way light falls on an object.

The parts of the object on which the light is strongest are called highlights and the darker areas are called shadows.

Tone can be used for a range of effects:

- to create the illusion of form
- to create a particular atmosphere
- to create contrast and focus attention
- to suggest depth and distance

Shading

Shading is used to create different tones in a drawing. A range of different techniques can be used to build up tones.

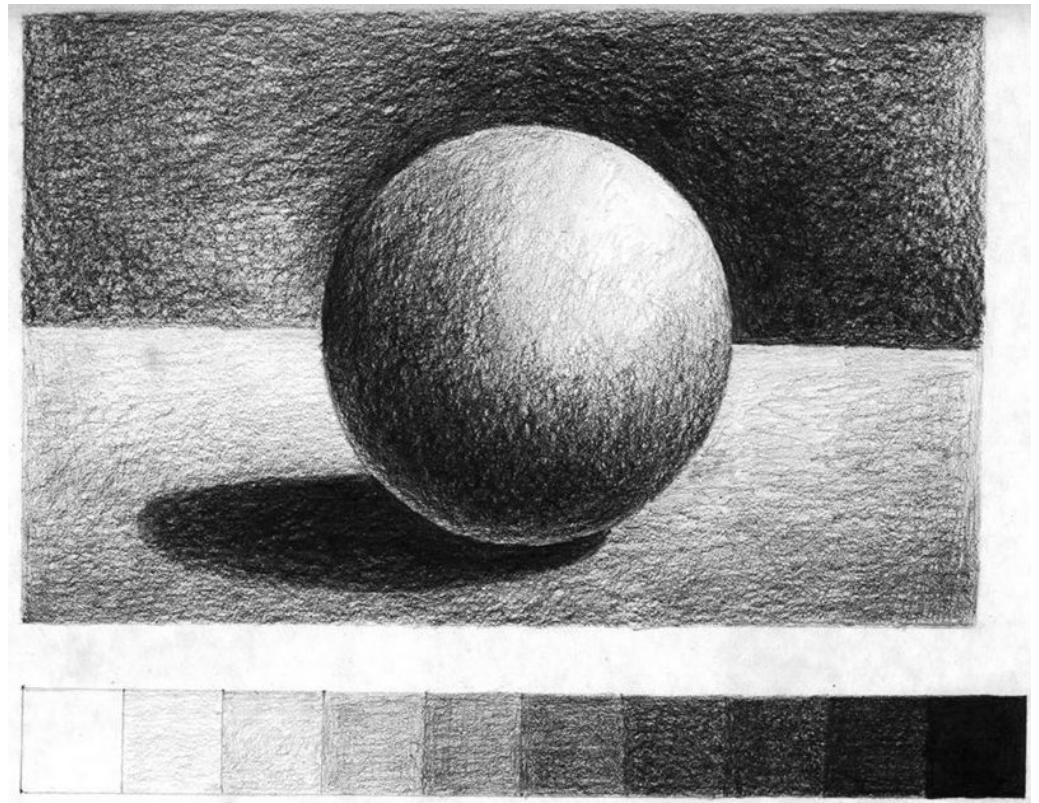


Tone can be used to create atmosphere in art and design work. Different atmospheres will be created depending on the value and contrast of the tones used.

Value

Value refers to how light or dark a tone is.

Dark tones are said to have low value.
Light tones are said to have high value.



Contrast

Contrast refers to the difference between tones. A small amount of contrast, or low contrast, between the lightest and darkest tones will tend to result in a more subtle or calm image.

The greater, or higher, the contrast of tones, the more dramatic the atmosphere.



Haystacks (Effect of Snow and Sun), 1891, by Claude Monet.



Haystack (Morning Snow Effect). (Meule, Effet de Neige, le Matin), 1891, by Claude Monet.

Tone

Answer the following questions:

1. Tone means?

2. Tone is created by the way 'what' falls on an object?

3. The parts of the object where the light is the strongest are called?

4. The darker areas of an object are called?

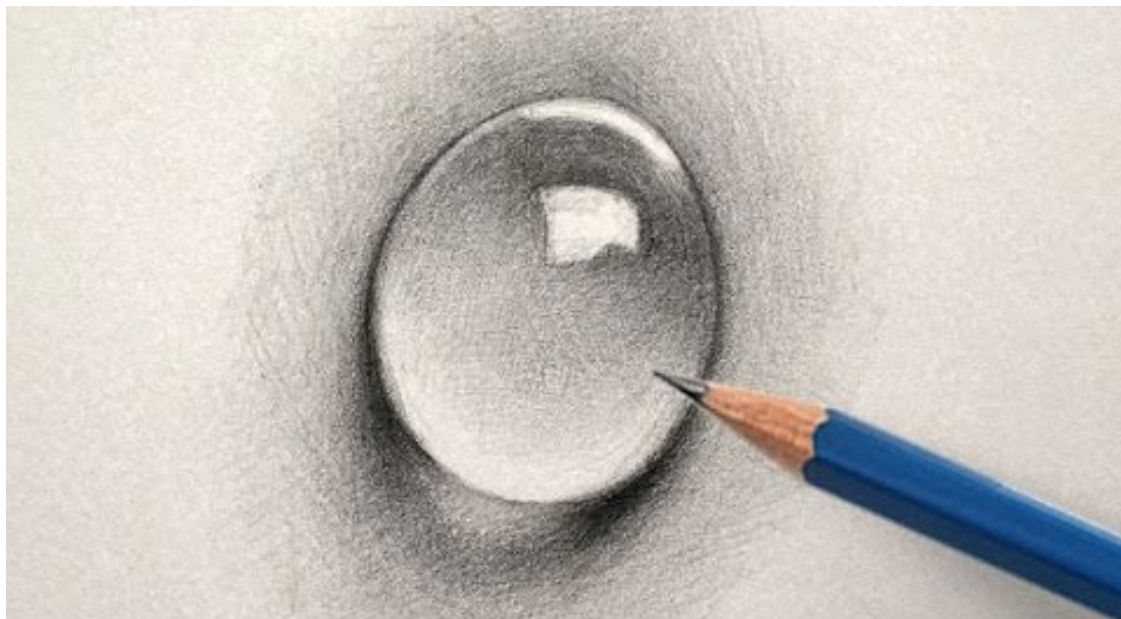
5. Tone can be used to create the illusion of what?

6. Shading techniques are used to create different tones in a ...?

7. Which term refers to how dark or light a tone is?

8. Which term refers to the difference between tones?

9. In the space below, make a careful tonal study of this water drop. Take care to use a sharp pencil and a range of values to show the contrast of highlights and shadows. (4)



My score /12

12-10- = Excellent

9-8 = Good

6-5 = Inconsistent

4-0 = Poor

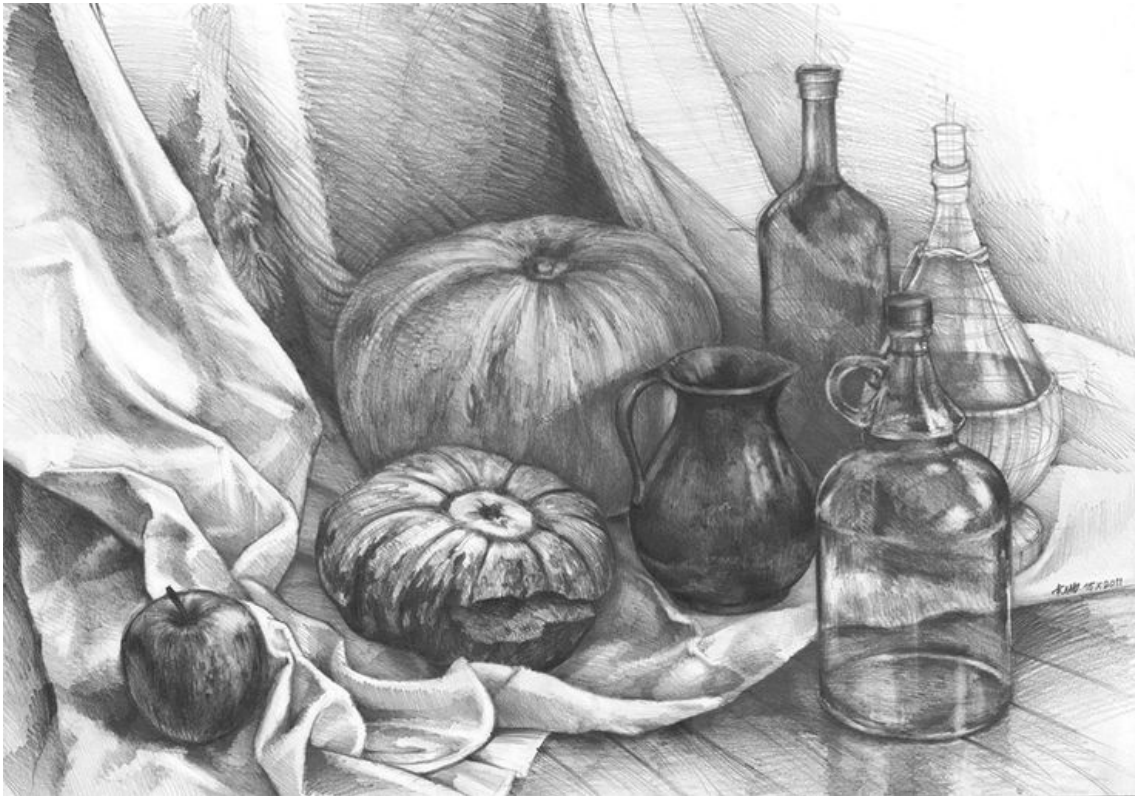
Homework 4

Texture

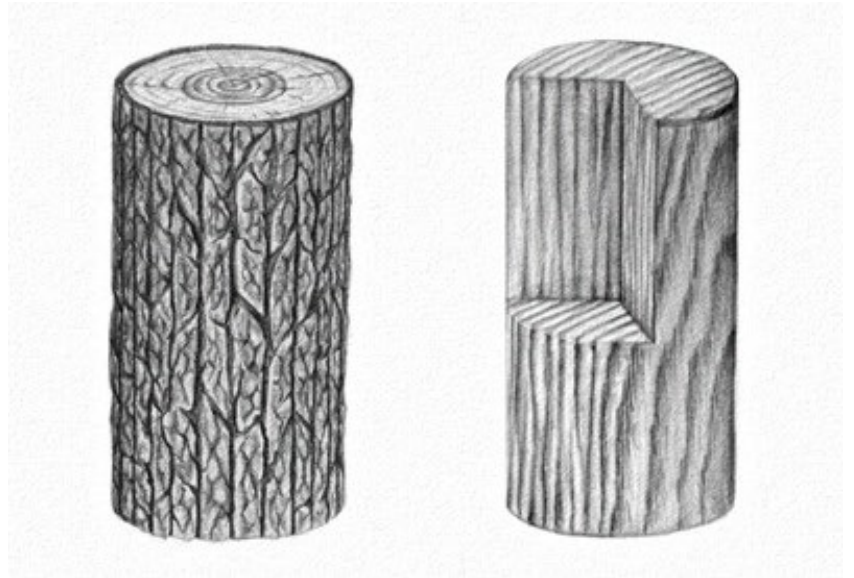
Texture means how the surface of something looks or feels.

Artists use their skills to create the illusion of an object's texture.

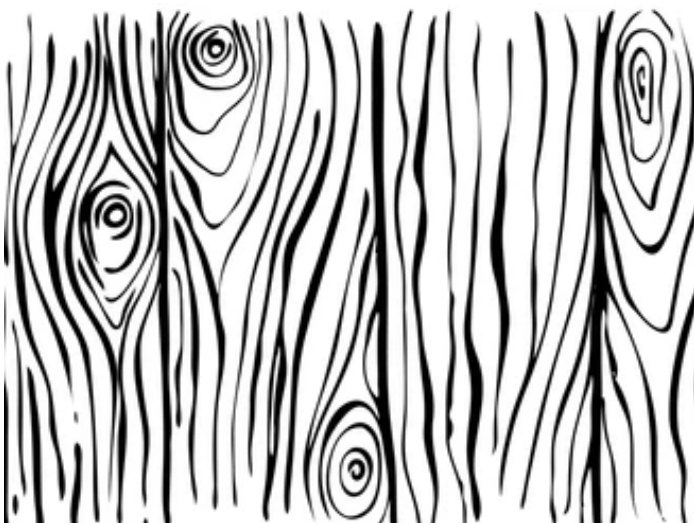
A still life may have a bottle, fruit and drapery. An artist will use their materials and media in a way which will try and make the bottle look shiny, the fruit look bumpy or grooved and the drapery soft, flowing and delicate.

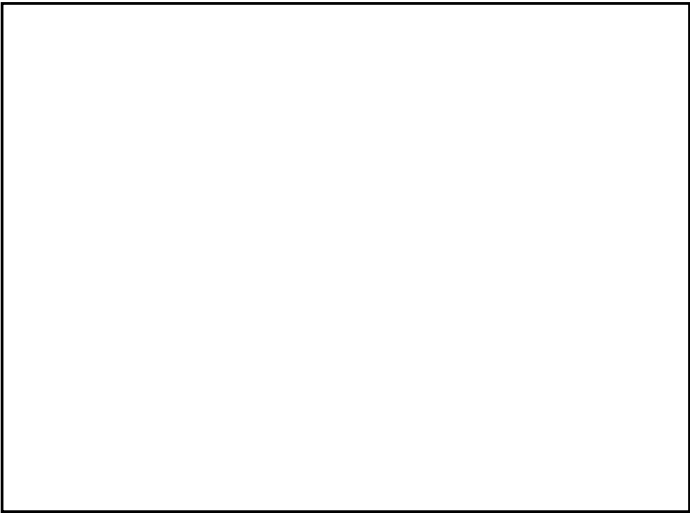
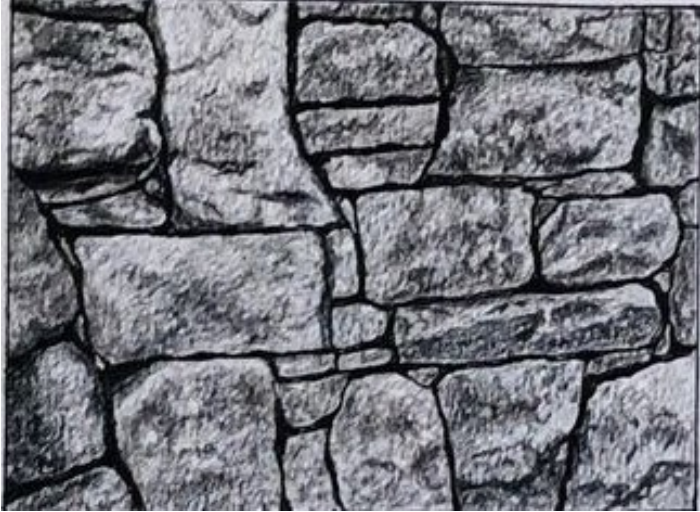


By using different mark making techniques, artists can make similar shaped objects look like very different textures. They use their skills of mark making to create the illusion of different surfaces. This, combined with an understanding of tone, can make very realistic textural drawings.

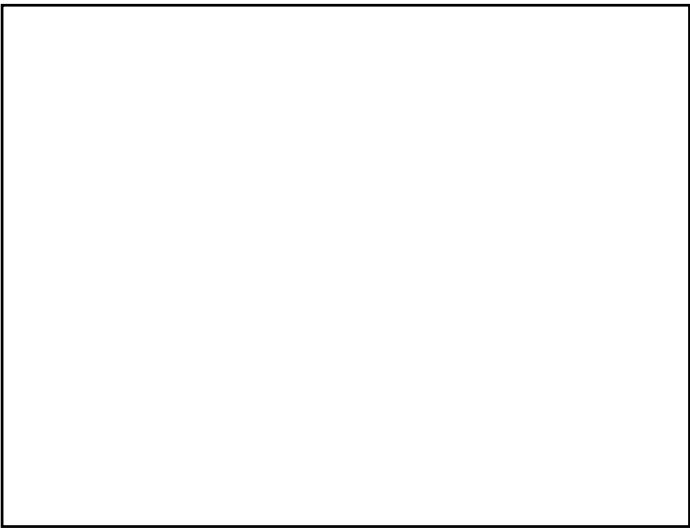


Use different mark making techniques to recreate each of the 3 textures in the boxes below using just your pencil





My score **/12**
12-10 = Excellent 9-8 = Good 7-
5 = Inconsistent 4-0 = Poor



Homework 5

Colour Theory Recap

1) Name the three primary colours

2) What is special about primary colours?

3) A secondary colour is made by mixing together two ...?

4) When two secondary colours or a primary and a secondary colour is mixed together, they are known as...?

5) What are colours that sit opposite each other in the colour wheel called?

6) Colours that are next to each other in the colour wheel are known as ...?

7) To make a tint you must add ...?

8) To make a shade you must add ...?

9) A colour scheme that is tints and shades of one colour is known as?

10) What does red and yellow make?

11) What does blue and red make?

12) What does yellow and blue make?

13) Complete the three pairs of complementary colours

a) Red and _____(1)

b) Blue and _____(1)

c) Yellow and _____(1)

14) Name three examples of warm colours

15) Name three examples of cool colours

My score

/17

17-15 = Excellent

14-11 = Good

10-7 = Inconsistent

6-0 = Poor

Homework 6

Space

Space in a work of art refers to a feeling of depth or three dimensions. It can also refer to the artist's use of the area within the picture plane. The area around the objects in a work of art is known as negative space, while the space occupied by the primary objects is known as positive space.

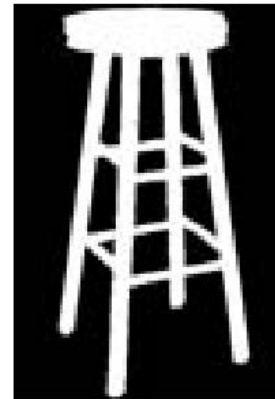
Positive and Negative Space



A Stool



The POSITIVE space
Is black



The NEGATIVE space
Is black

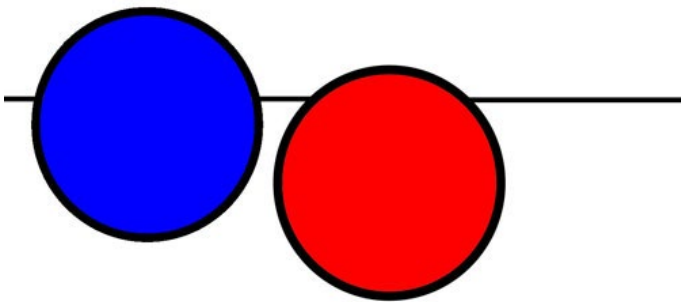
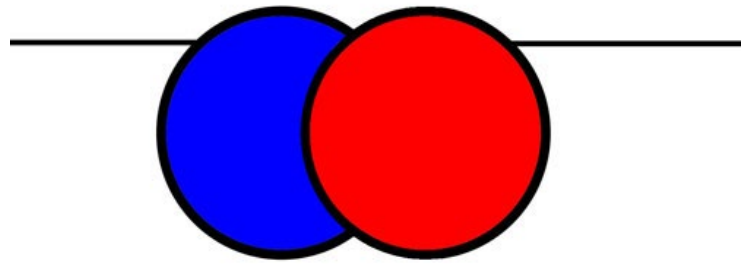
In terms of art, space is the area around, above, and within an object. With consideration to drawings and paintings, our goal is to create the illusion of space.

The Uses of Space

Many new artists overlook the importance of creating space in a drawing or painting. The result usually looks flat or objects can appear to be floating.

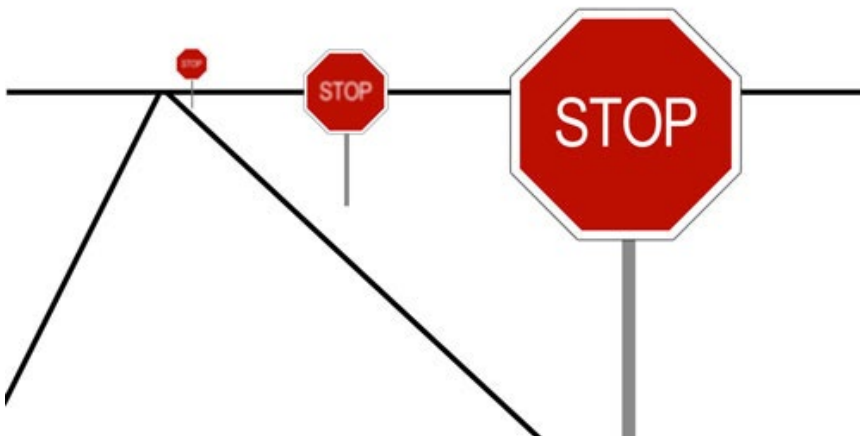
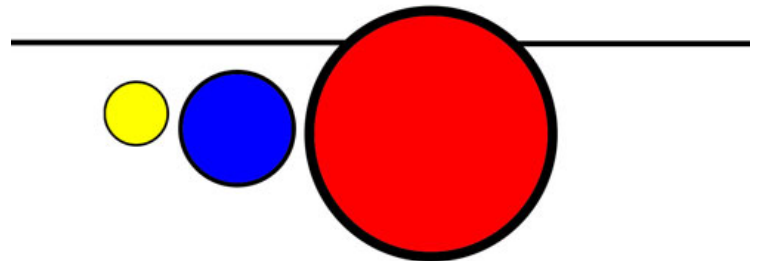
There are six ways an artist can create the illusion of space on a 2-Dimensional surface.

Overlapping - occurs when objects that are closer to the viewer prevent the view of objects that are behind them.



Placement on the paper - Objects placed higher within the picture plane will appear further away.

Size - Objects that are smaller will appear further away from the viewer.



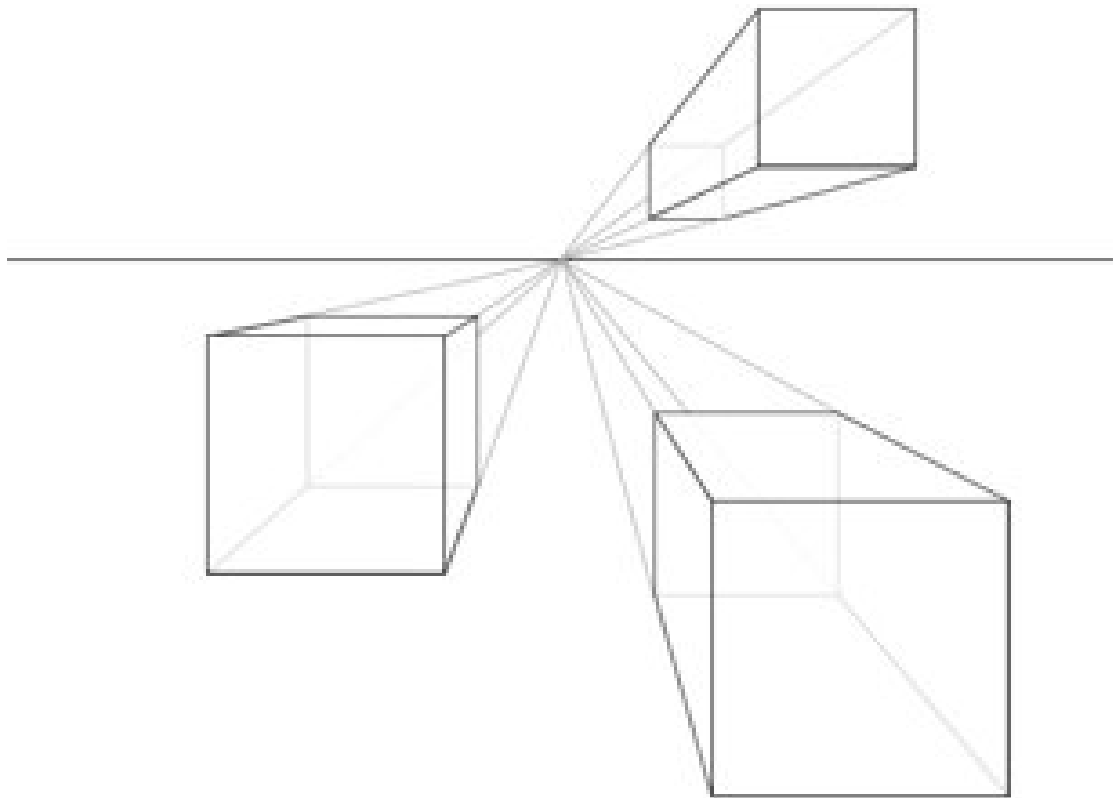
Detail - Objects that are further away should have less detail than objects that are closer to the viewer.

Colour and Value - Objects that are further away are cooler in colour temperature, while objects that are closer are warmer. Objects that are further away are lighter in value, while objects that are closer are typically darker in value.



Perspective - Linear perspective is a drawing method that uses lines to create the illusion of space on a flat surface. There are three types of linear perspective.

This is an example of One point perspective. One point perspective uses one vanishing point to accomplish this illusion of depth and distance.



Space

Answer the following questions:

1. What is the area that surrounds the objects in an image called?

2. When an artist overlooks the importance of space in a drawing it can look?

3. How many ways are there that an artist can create the illusion of space on a 2-Dimensional surface?

4. Name 3 ways an artist can create the illusion of space on a 2-dimensional surface.

5. Will objects placed higher within the picture plane appear closer or further away?

6. Will objects that are smaller will appear closer or further away from the viewer?

7. Will objects that are further away have less or more detail than objects that are closer to the viewer?

8. Will objects that are further away appear lighter or darker than those closer?

My score /8

8 = Excellent

7-6 = Good

5-4 = Inconsistent

3-0 = Poor

Homework 7 Composition

Composition refers to the arrangement of the drawing on the page.

The term composition means ‘putting together,’ and can apply to any work of art, from music to writing to photography, that is arranged or put together using conscious thought. In a 2D piece of Art, it is where you choose to put things on your page, the layout.

The aim is to get the viewer pulled into the painting, their eye drawn across the whole composition, enjoying the scenery, before returning to the focal point. A successful composition does this subtly, without us being aware of it.

The Elements of Composition are, in Western art, generally considered to be: Balance, Contrast, Focus, Motion, Pattern, Proportion, Rhythm and Unity.

Balance: Is there a symmetrical or asymmetrical arrangement? Symmetry can add a sense of calm, orderliness, whereas asymmetry can lend a sense of unease, imbalance.

Contrast: Are the dramatic differences in tones, strong darks and intense lights, or is it minimal?

Focus or Emphasis: Is there a focal point, somewhere that the “most important bit” where the viewer’s eye will ultimately pause and rest, rather than wandering around and around.

Motion or Movement: Is the composition static or is there a sense of movement? This can be done in many different ways, including through suggested movement with soft edges.

Pattern: If you look at the lines and shapes, is there an underlying structure that is pleasing or intriguing, or is it chaotic?

Proportion: Do the things in the painting relate to one another, do they fit together? If it's realism, does it follow the rules of perspective, are nearby things bigger than things further away for instance.

Rhythm: Find the beat, as you would in a piece of music. Its job is to lead and pace the eye across the composition. Look at the fundamental shapes as well as colour, repetitions and echoes.

Unity: Is there anything in the painting that feels it doesn't belong, something sitting awkwardly, out of place?

It can feel like a lot to consider in each and every painting; through practice it becomes more intuitive. Checking each is a part of self-critiquing. If you find it hard remember the Elements of Composition, here's a mnemonic:

Before Considering Final Mark, Ponder Painting Rightside Up.

Balance, Contrast, Focus, Motion, Pattern, Proportion, Rhythm and Unity.

or perhaps

Before Considering Final Mark, Ponder Painting wRongside Up.

Balance, Contrast, Focus, Motion, Pattern, Proportion, Rhythm and Unity.

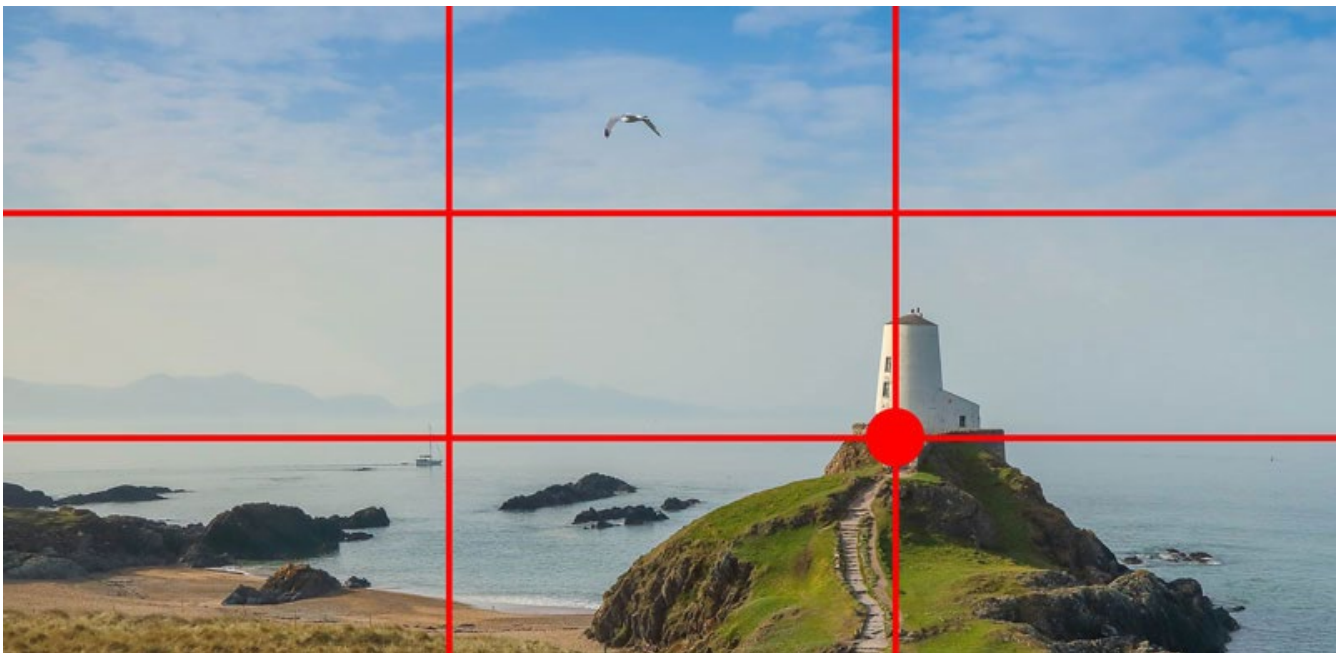
The Rule of Thirds

The Rule of Thirds is used to avoid a central focal point but still give overall unity to the composition. This makes the artwork more visually appealing for the viewer.

How to Apply the Rule of Thirds. Start by dividing your canvas with two equally spaced vertical and horizontal lines to give you a nine-part grid. Place your focal point subject matter at one of the intersections of these nine segments. This creates a carefully planned "design imbalance" that, while off-center, still looks impactful.



See how the rule of thirds has been applied to this image to make it a more interesting composition.



Composition

Answer the following questions:

1. What does the term composition refer to in art?

2. List the eight elements of composition (8)

a) _____

b) _____

c) _____

d) _____

e) _____

f) _____

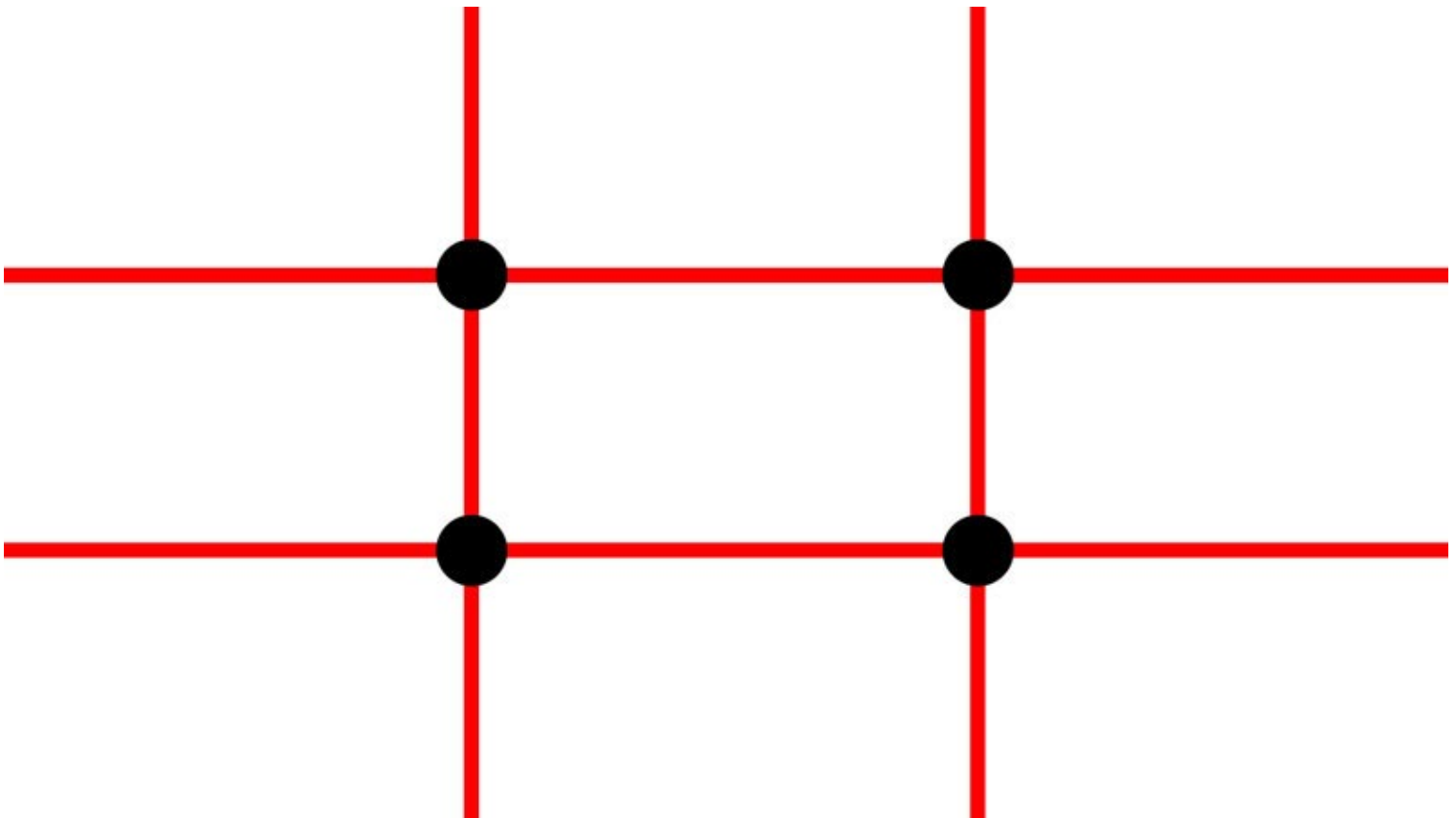
g) _____

h) _____

3. What is the mnemonic given to help you remember the eight elements of composition? (you can use either)

4. What is the rule of thirds used to help avoid?

5. Draw an image within the rule of thirds grid below, where the focal point sits on one of the black dots where the lines cross e.g a landscape with a tree.



	My score	/12	
12-11 = Excellent	10-9 = Good	7-5 = Inconsistent	4-0 = Poor

Homework 8

Pattern

A pattern is a design in which lines, shapes, forms or colours are repeated. The part that is repeated is called a motif. Patterns can be regular or irregular.

Patterns are all around us, in nature as well as in art and design. How complicated a pattern is depends on what is repeated and the way in which it is repeated.

The starting point of any pattern is the single element that will be repeated. This is called a motif. A motif can be repeated and arranged in many different ways in order to create different types of pattern.

Regular patterns

Patterns can be regular or irregular.

In regular patterns the motif (or motifs) is repeated in a way that is predictable.

It could be exactly the same each time, or it could change in a way that is regularly repeated.

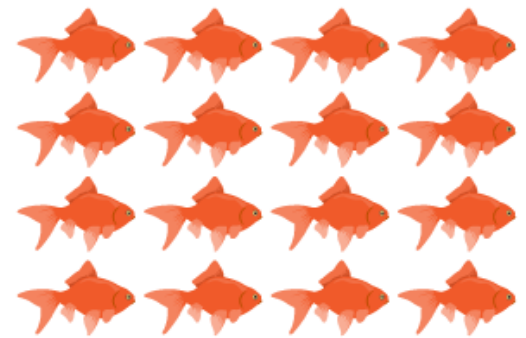
Block repeat

The most basic way of creating pattern is to block repeat.

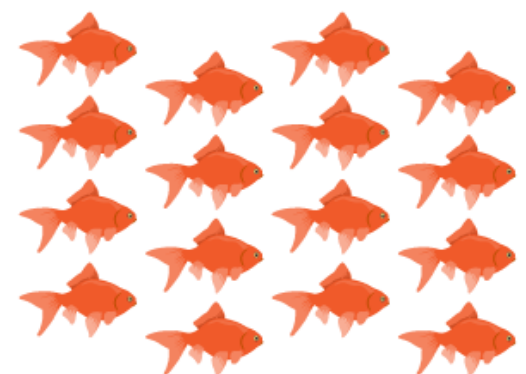
This is where the motif is repeated in exactly the same way in horizontal and vertical lines.

Half-drop

Half-drop patterns are made by dropping every second line of motifs down a half-length height of the motif.



Regular pattern

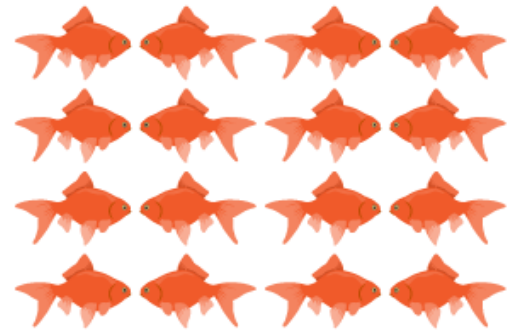


Half drop pattern

Mirrored

Another way of creating patterns is to mirror the motif.

Motifs can be mirrored horizontally or vertically.

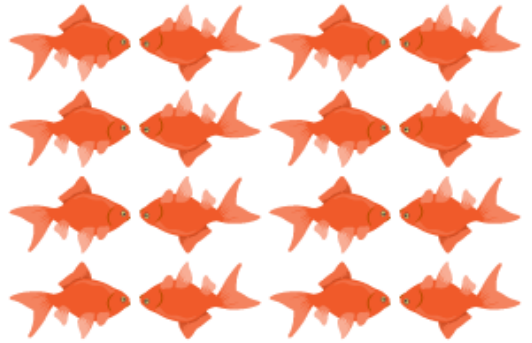


Mirrored pattern

Rotational

A rotational pattern is where the motif has been rotated on its axis.

The motif may be rotated and repeated at any angle, but most designers will rotate at 90 or 180 degrees to make more uniform patterns.



Rotational pattern

Irregular pattern

An irregular pattern is one in which the motif changes or the way it is repeated is unpredictable.



Radiating pattern

A pattern that is arranged around a central point is called a radiating pattern. It seems to radiate out in all directions. Radiating patterns result in designs that feel balanced. They can be an effective way to create a focal point at the centre of the pattern.



Pattern

Answer the following questions:

1. What is the definition of a pattern?

2. Name a pattern that can be found in nature

3. Patterns can be regular or ...?

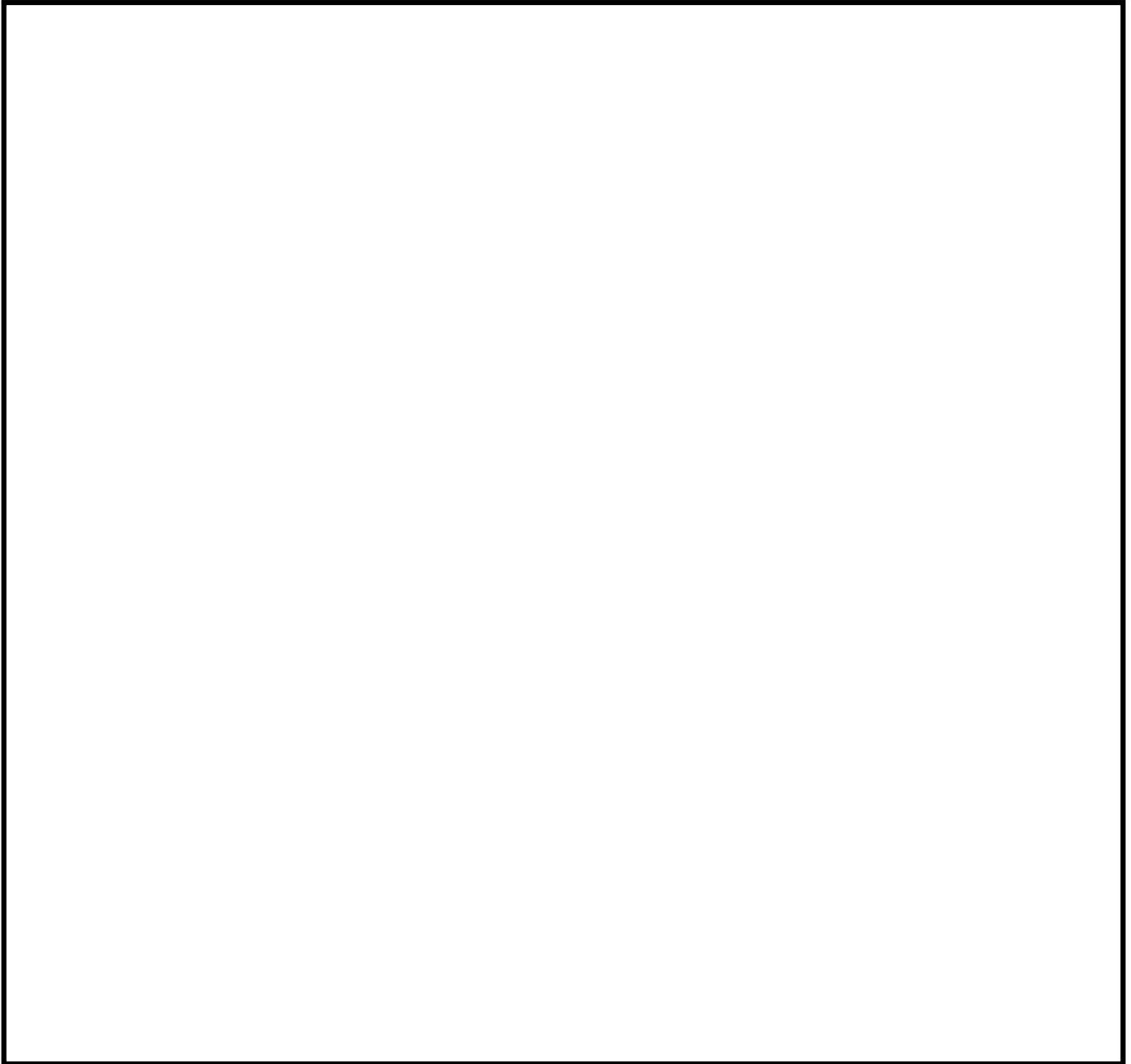
4. The part of a pattern that is repeated is known as a ...?

5. Which type of pattern is made by dropping every second line of motifs?

6. Which type of pattern is where the motif has been rotated on its axis?

7. What is a block repeat pattern?

8. Design a radiating pattern in the box below (3)



	My score	/10	
10-9 = Excellent	8-7 = Good	6-4 = Inconsistent	3-0 = Poor

Revision

Use this booklet and your knowledge organiser to revise everything you have learnt about the Formal Elements of Art. You will have a short quiz to test your knowledge from this half term in the next lesson.

You may be tested on your knowledge of:

Line
Shape
Form
Tone
Texture
Colour
Space
Composition
Pattern

Mini Test
The Formal Elements

Circle the correct answer

- | | | | | |
|-----|---|---|---|---|
| 1. | a | b | c | d |
| 2. | a | b | c | d |
| 3. | a | b | c | d |
| 4. | a | b | c | d |
| 5. | a | b | c | d |
| 6. | a | b | c | d |
| 7. | a | b | c | d |
| 8. | a | b | c | d |
| 9. | a | b | c | d |
| 10. | a | b | c | d |

	My score	/10	
10-9 = Excellent	8-7 = Good	6-5 = Inconsistent	4-0 = Poor

My Homework Record

Tick your result for each homework this half term

Task	Excellent	Good	Inconsistent	Poor
1. Line				
2. Shape and Form				
3. Tone				
4. Texture				
5. Colour				
6. Space				
7. Composition				
8. Pattern				

Work ethic

How much effort did you put in to your homework this half term? Tick which statement applies to you.

☐ EXCELLENT

My best effort is applied to every homework. My homework is always completed on time and to the best possible standard. I have done my own reading on the subject to ensure I understand it fully.

☐ GOOD

I work hard to complete my homework by spending at least 20 minutes per week ensuring it is completed to a pleasing standard.

☐ INCONSISTENT

I sometimes complete my homework on time and to an acceptable standard, but not always. I do not always spend the time required to do my homework well.

☐ POOR

I rarely complete my homework on time or to an acceptable standard.