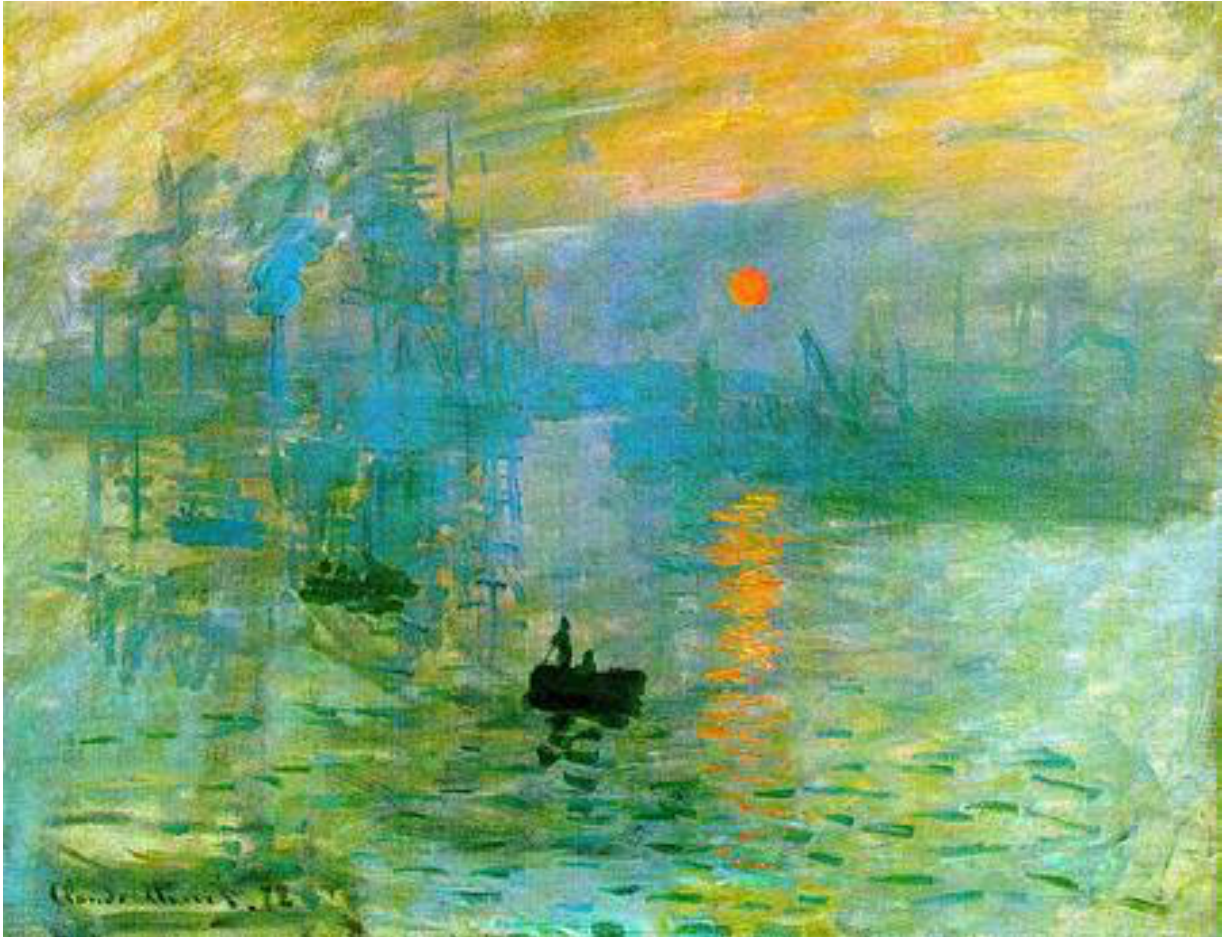


S

# Impressionism



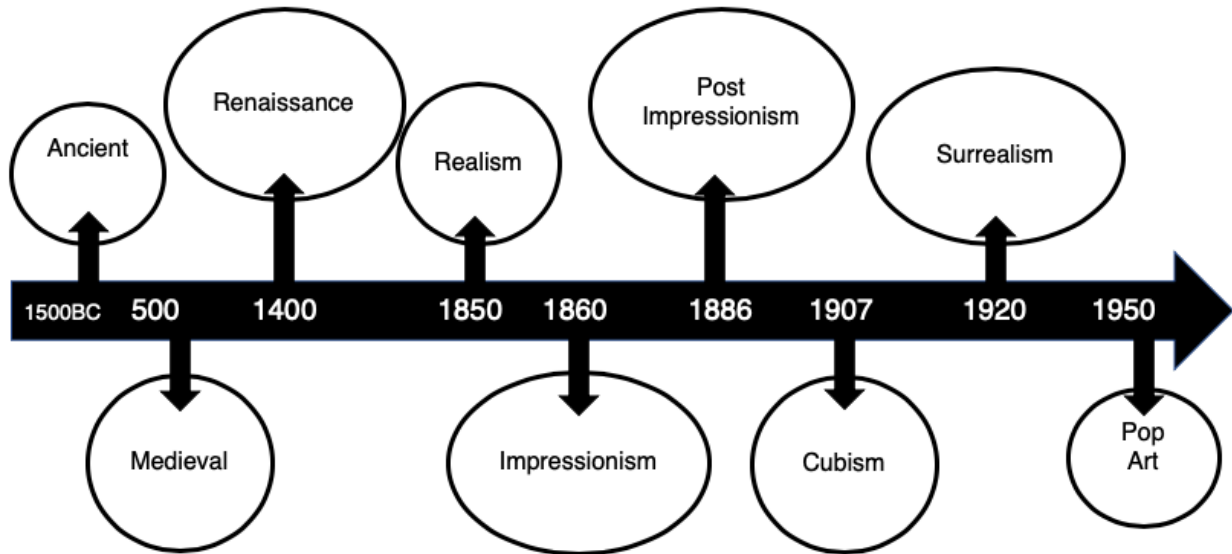
Name \_\_\_\_\_ Form \_\_\_\_\_

Teacher \_\_\_\_\_ Art Group \_\_\_\_\_

Homework hand in day \_\_\_\_\_

Year 8 Term 1a

# About Impressionism



These are examples of different art movements. An art **movement** is a period of time when artists worked in similar styles inspired by similar ideas. Look where Impressionism falls within the timeline, after Medieval art and the Renaissance that we studied last year.

## Realism

Before Impressionism artists tended to paint realistically, this was called **Realism**. The realists wanted to paint **ordinary** people and everyday activities as true to life as possible.

## Impressionism

Impressionism began in **France** in the late 19<sup>th</sup> century when a group of artists decided to go against the traditional style of the Salon (a large annual art **exhibition** in France) and form a new style of painting all their own. The invention of the camera meant it was no longer needed for them to paint **realistically**. They wanted to capture the light and **colour** of the moment rather than the details of objects they were painting, like an 'impression'. They used **bright** and vivid colours to highlight an object's natural colour. They liked to paint **outdoors** and so had to work quickly before the **light** changed. They used thicker paints, heavy and loose brush strokes and very little detail. They were less concerned with painting realistically and more interested in capturing the way light shines on objects and how colours change in the sun.

# Task 1

## About Impressionism

EXHIBITION    OUTDOORS    ORDINARY    MOVEMENT    FRANCE  
COLOUR    LIGHT    REALISM    REALISTIC    BRIGHT

1. A period of time in history when artists worked in a similar style is called an art \_\_\_\_\_
2. Which art movement came before Impressionism?  
\_\_\_\_\_
3. The realists like to paint \_\_\_\_\_ people and everyday activities.
4. In which country did the impressionist movement take place?  
\_\_\_\_\_
5. The Salon in Paris is a large annual art \_\_\_\_\_
6. The invention of the camera meant they no longer needed artists to make images look \_\_\_\_\_
7. Impressionists wanted to capture light and \_\_\_\_\_ in the moment.
8. Impressionists preferred to paint their pictures \_\_\_\_\_ rather than inside a studio.
9. They had to paint quickly before the \_\_\_\_\_ changed.
10. Impressionists used \_\_\_\_\_ vivid colours in their work.

My score    /10

10-9 = Excellent    8-7 = Good    6-5 = Inconsistent    4-0 = Poor

# The Impressionists

Read the information and watch the video via this link from the Tate Gallery website to discover more about the Impressionists. You may need to re watch and pause the video to help you answer the questions.

<https://www.tate.org.uk/kids/explore/what-is/impressionism>



**IMPRESSIONISM**

Bright colours, bold brushstrokes and a rebellious spirit! Find out more about the impressionist painters

This is Claude Monet, one of the most famous impressionist painters

**WHY IS IT CALLED IMPRESSIONISM?**

## Task 2

### The Impressionists

IMPRESSION COLOURS CARICATURES MONET PLEIN  
THICKLY MORISOT PARIS DEGAS NEATER

1. Who is the most famous Impressionist artist?

*Claude* \_\_\_\_\_

2. What did Monet draw when he first became an artist?

\_\_\_\_\_ *of his teachers and people on the beach.*

3. What is the title of the painting the movement is named after?

‘ \_\_\_\_\_ *Sunrise*’

4. Name the third Impressionist mentioned in the video

*Alfred Sisley, Pierre-Auguste Renoir, Edgar* \_\_\_\_\_.

5. What was Impressionism known for?

*Bright* \_\_\_\_\_ *and bold brush strokes.*

6. Where did this group of artists live?

\_\_\_\_\_ *in France*

7. What is the French term for painting outdoors?

*En* \_\_\_\_\_ *Air*

8. What is the name of the only female Impressionist at that time?

*Berthe* \_\_\_\_\_

9. What did the jury of the salon think that art should be like?

\_\_\_\_\_ *and based on myths and battles.*

10. How does the article describe texture of paint and brushstrokes of Impressionist paintings?

*They painted* \_\_\_\_\_ *with quick, messy brush strokes.*

My score **/10**

10-9 = Excellent

8-7 = Good

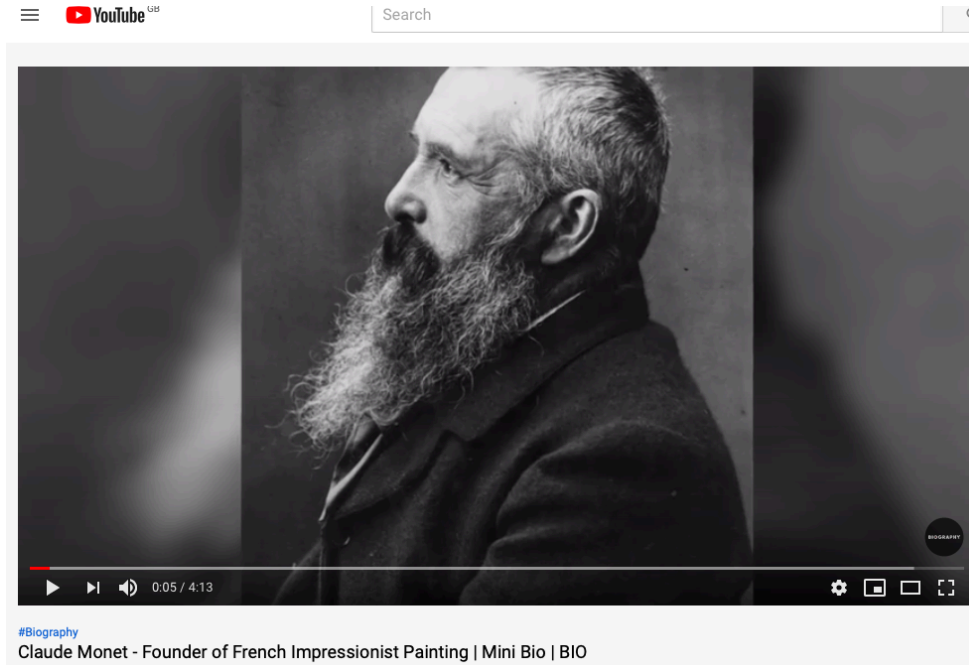
6-5 = Inconsistent

4-0 = Poor

# Claude Monet

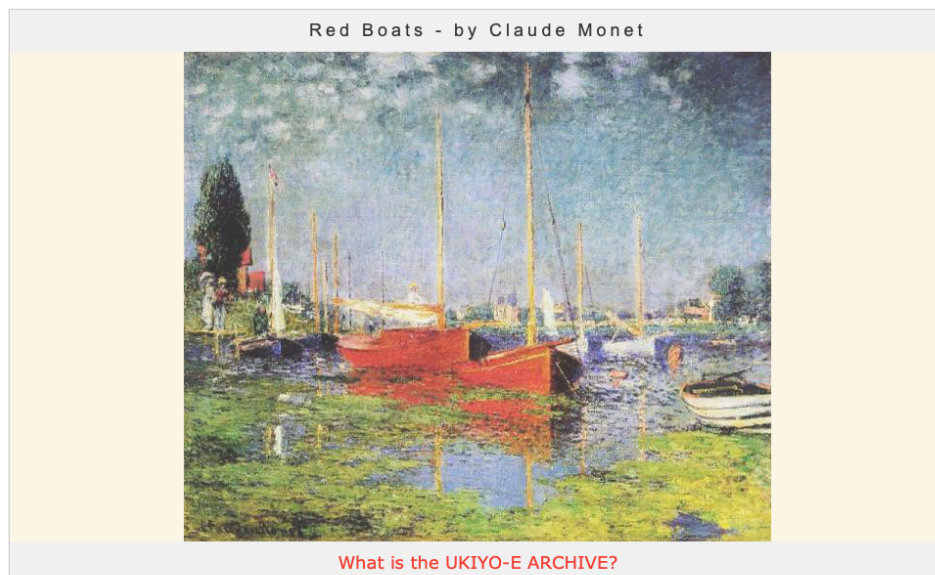
Watch the video and read the biography of Claude Monet through the links below to find out more about the artist.

<https://www.youtube.com/watch?v=iGoGshNbFew>



[https://www.artelino.com/articles/claude\\_monet.asp](https://www.artelino.com/articles/claude_monet.asp)

## Claude Monet Biography - 1840-1926



Claude Monet was one of the founding fathers of French Impressionism. Monet's concern was to reflect the influence of light on a subject. He never abandoned his Impressionist painting style until his death in 1926 when Fauvism and Cubism were *en vogue* and when abstract painting came into existence.

### First Painting Lessons

Claude Monet was born in Paris, but grew up in Le Havre. His first artistic output were caricatures when he was a little boy. Close to his home was a little shop owned by a marine painter, Mr. Eugene Boudin. He recognized the talent of the boy and gave him his first painting lessons.

# Task 3

## Claude Monet

LE HAVRE                  CATHEDRAL                  EUGINE BOUDIN                  FINISH  
GIVERNY                  LIGHT                  WATERLILLIES                  RENOIR

1. Claude Monet was born in Paris, but where did he spend his childhood?

---

2. Which local artist encouraged Monet to paint outdoors?

---

3. What did Monet do differently to other artists that painting outdoors?

*He painted it from start to \_\_\_\_\_ outdoors.*

4. After serving in Africa, Monet returned to Paris. Name three major artists of the era he met and became friends with.

*Pierre-Auguste \_\_\_\_\_, Camille Pissarro, Edgar Degas.*

5. From around 1890 Monet began to paint series of pictures of one subject. Name 3 subjects which he liked to paint over and over again.

*Haystacks, The Rouen \_\_\_\_\_, The Houses of Parliament.*

6. Monet painted the same scene many times because he wanted to capture the changing effects of what?

---

7. Monet created an elaborate garden at his house, inspiring his paintings. Name the town where Monet's house was?

---

8. Name Monet's greatest set of paintings that he painted from the lake in his garden.

---

My score

/8

8 = Excellent

7-6 = Good

5-4 = Inconsistent

3-0 = Poor

# Techniques of the Impressionists

The Impressionists often painted 'en plein air', meaning in the open air, during the evening. This allowed them to copy the shadowy effects of evening light during the sunset known as 'effets de soir'. However, Impressionists would not use black to paint shadows, they used **blue** to represent the reflection of the sky onto surfaces.

There were many new tools that emerged in the 19th century that made this possible. Artists would paint on smaller canvases as they were easier to **carry**. Easels became collapsible and portable, and pre-mixed **paint** in tubes was introduced. Before the development of pre-mixed paint, painters mixed their own paint and stored it in animal bladders.

To capture images before the **light** changed artists had to paint quickly, using small, rapid brush strokes. They wanted to show how the light of the sun affected the colour of objects.

Impressionists used limited colours on their palettes of just red, blue, yellow, green and white.

They would not mix their paints on the palette but place the colours side by side to allow a person's eye to mix the colour. This is called **optical mixing**.

The paint was applied **thickly** which gives a vibrant surface texture, known as impasto.

The Impressionist painters used broken colour - layers of colours, leaving gaps in the top layers to reveal the colours underneath. One way to achieve this is a technique called **sgraffito** (scratching into the paint to reveal the colour underneath).

Greys and dark tones were created by mixing complementary colours, red and **green**, yellow and **purple** and blue and **orange**. Complementary colours were also used by placing them next to each other in an image to make them appear more vibrant and vivid than they would when paired with any other colour.

## Task 4

### Techniques of the Impressionists

SGRAFFITO      THICKLY      PAINT      CARRY      LIGHT  
GREEN      PURPLE      ORANGE      OPTICAL      BLUE

1. Why were Impressionist paintings usually quite small?

*So they were easy to \_\_\_\_\_*

2. Name 2 examples of how tools and equipment changed to allow the Impressionists to work outdoors more easily.

*Portable easels and premixed \_\_\_\_\_ in tubes*

3. Why did the Impressionists need to paint quite quickly?

*To capture the image before the \_\_\_\_\_ changed*

4. Placing colours side by side allowing a person's eye to 'mix' the colour is called?

\_\_\_\_\_ *mixing*

5. What is impasto?

*Paint that is applied very \_\_\_\_\_ so it looks textured*

6. Name the technique of scratching through paint to reveal the surface underneath.

7. Name the 3 pairs of complementary colours

*Red and \_\_\_\_\_ Yellow and \_\_\_\_\_ Blue and \_\_\_\_\_*

8. What colour was used instead of black to paint shadows?

\_\_\_\_\_

My score      /8

8 = Excellent      7-6 = Good      5-4 = Inconsistent      3-0 = Poor

# **Task 5**

## **Revision**

Use this booklet and your knowledge organiser to revise everything you have learnt about Impressionism. You will have a short quiz to test your knowledge from this half term in the next lesson.

**You may be tested on your knowledge of:**

Where Impressionism sits within the timeline

Key factors influencing the development of Impressionism

The key features of Impressionism

Well known Impressionist artists

Claude Monet

Impressionist Techniques

Key terminology

# Mini Test

## Impressionism

Circle the correct answer

1.            a            b            c            d
2.            a            b            c            d
3.            a            b            c            d
4.            a            b            c            d
5.            a            b            c            d
6.            a            b            c            d
7.            a            b            c            d
8.            a            b            c            d
9.            a            b            c            d
10.           a            b            c            d

My score            /10

10-9 = Excellent

8-7 = Good

6-5 = Inconsistent

4-0 = Poor

# My Homework Record

Tick your result for each homework this half term

Task	Excellent	Good	Inconsistent	Poor
1. About impressionism				
2. The Impressionists				
3. Claude Monet				
4. Techniques of the Impressionists				
5. Mini Test				

## Work ethic

How much effort did you put into your homework this half term? Tick which statement applies to you.

**EXCELLENT**

My best effort is applied to every homework. My homework is always completed on time and to the best possible standard. I have done my own reading on the subject to ensure I understand it fully.

**GOOD**

I work hard to complete my homework by spending at least 20 minutes per week ensuring it is completed to a pleasing standard.

**INCONSISTENT**

I sometimes complete my homework on time and to an acceptable standard, but not always. I do not always spend the time required to do my homework well.

**POOR**

I rarely complete my homework on time or to an acceptable standard.