

# Making a scrub wash bag for the key workers







# Recycling – Reuse

If you have:

Duvet cover/Sheets/Shirts

Sewing machine.....

Have a go





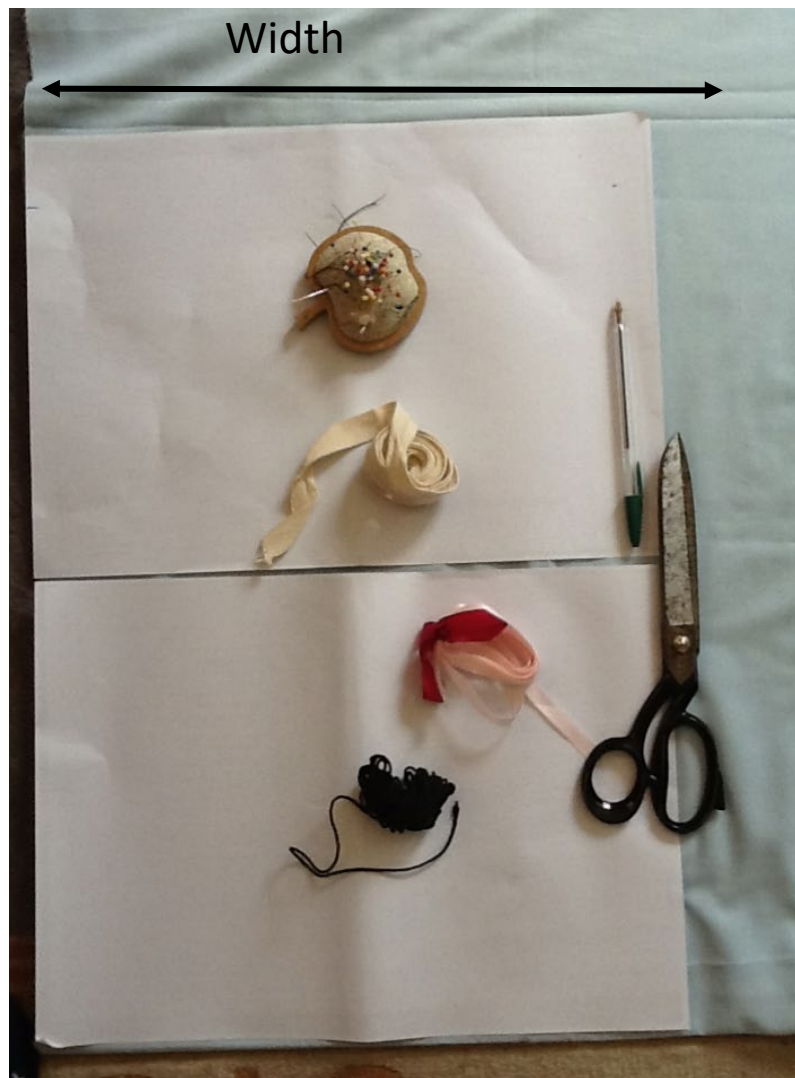
You will need:

scissors/pins, including safety  
pin/material/cord or ribbon

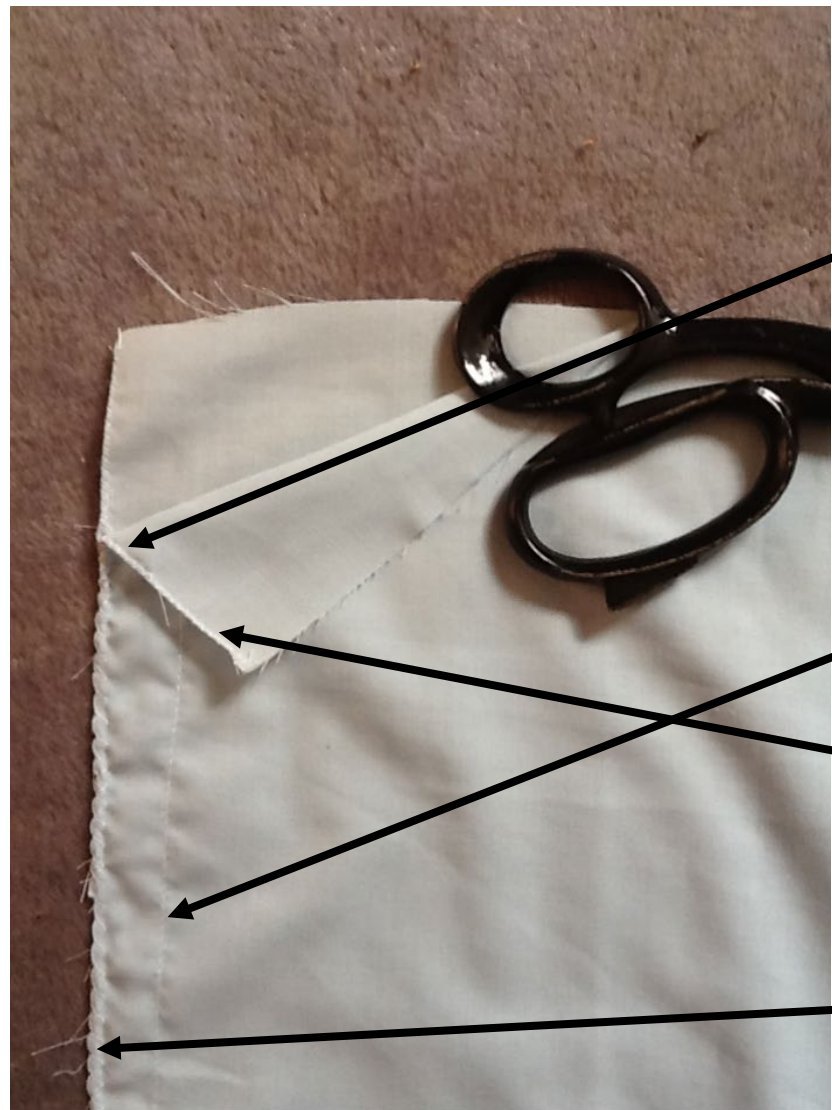
1- Using the recycled material fold in two  
& pin 2 A3 sheets plus add a further  
10.0cms on the width.

2 - Use the folded edge of the material for  
the bottom

3 - Cut around the outer edge of the  
paper







1 - Mark 5.0cm down from the top edge both sides

2 - Pin a 1.5cm seam allowance from the 5.0cm point.

3 - Sew straight stitch both sides, back tack top & bottom.

4 - Cross stitch to neaten the individual 5.0cms top edges separately

5 - Cross stitch neaten the remainder of the sides together.





If you cannot use a fold, you will have to sew and neaten the bottom as well





1 - Turn the top edge (raw) 0.5cms under then fold and pin 2.25cms of both sides of the bag.

This will create a tunnel for the ribbon/cord

2 - Sew the pinned edge.







1 - Using a length of ribbon/cord which is double the width of the bag, thread through the tunnel using a safety pin.

2 - Tie a knot at the side.





Turn the right way round