

Face masks



Stage 1 – cut

On the pattern pdf I did not use the gusset patterns

Cut 3 masks, cut 1 pair chin pieces. Plus 2 x 25cms elastic.

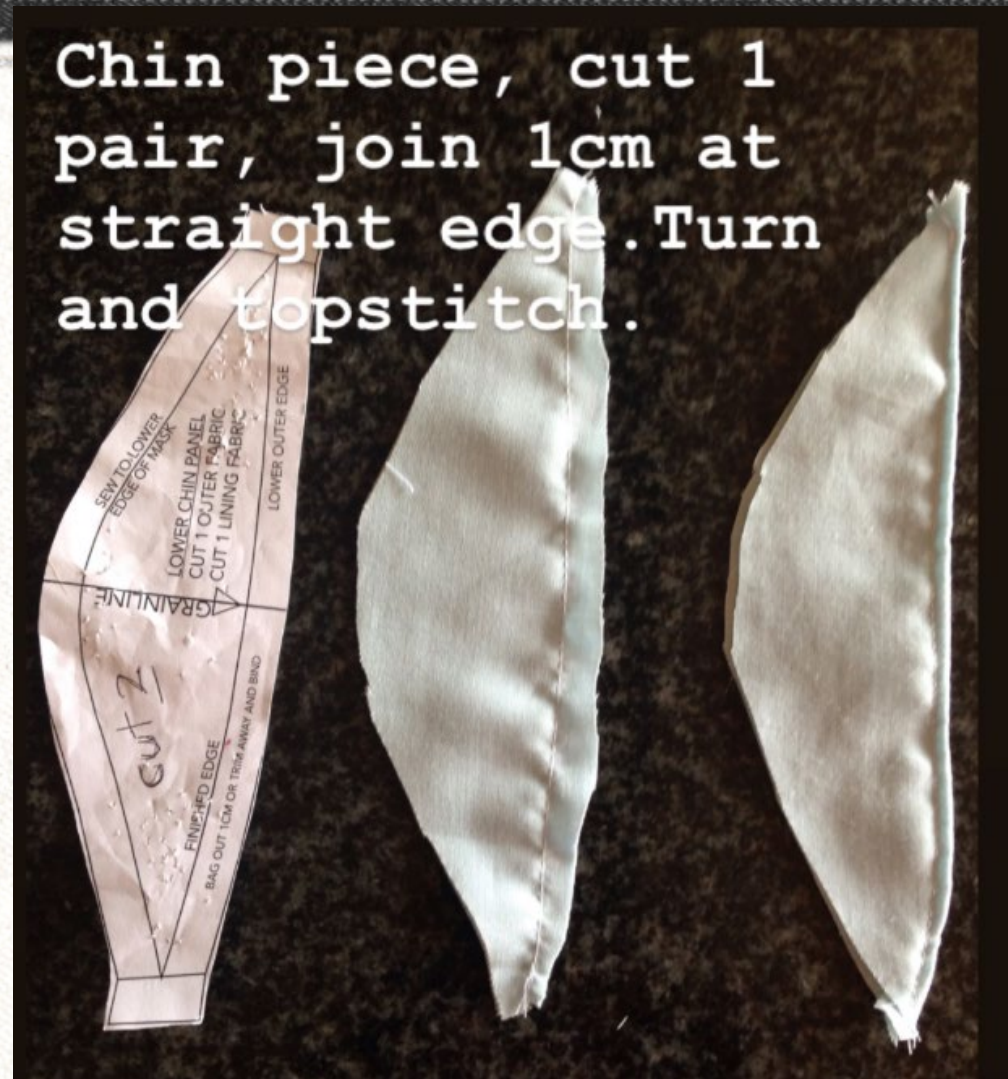


Stage 2 – Sew darts

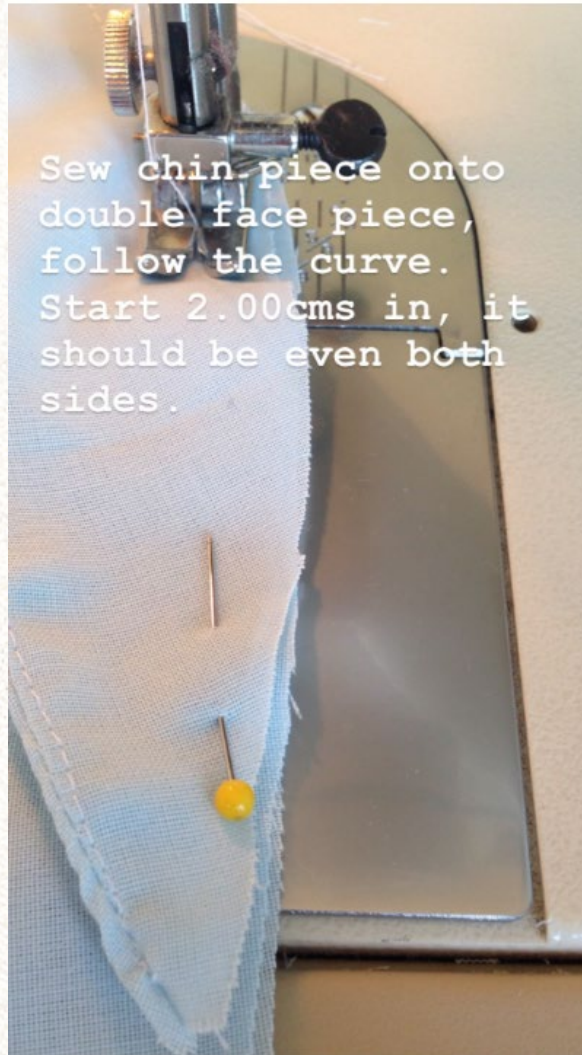
Face piece, cut 3, 2 pieces double and sew dart together, single piece sew dart



Stage 3 – Make chin section



Stage 4 – attach chin piece



Stage 5 – Attach single face piece to the main piece, turn and topstitch



Turn the right way round, poke
out the corners and topstitch

Stitch carefully the
open edge, tucking
under 5 mm. Ensure
the underside is
pulled flat.



Stage 6 – Create tunnel

Turn 1.5cms in at each end to create a tunnel, sew.



Stage 7 – thread and sew elastic

Cut the elastic approx 25cms, thread through the tunnel. Overlap the two elastic ends and join, secure with a zigzag stitch.

