

YEAR 12 ART & DESIGN FOUNDATION STUDIES

Year 12 Initial Sketchbook Work: Exploring Surfaces

Thank you for deciding to join the A-Level Art and Design course. The enthusiasm and commitment you have already shown, are essential for the next exciting stage of your artistic development and of course the continued practice of drawing.

The following task, a technical challenge, proved successful with the current Year 12 students. They presented work in an A5 spiral bound sketch book. Due to circumstances, please use A5 paper. The work can be added to a sketchbook at a later date, which the department will provide.

You are urged to try as many techniques as possible to **re-create textural** and **tactile** surfaces, working directly from your own photographs taken on daily walks or around the home environment. If this proves too limiting, you can download some images from the Internet, and you can work from the images below.

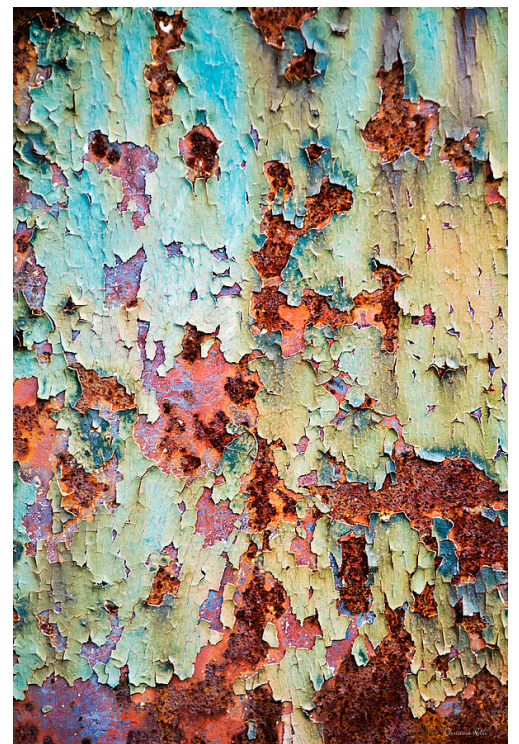
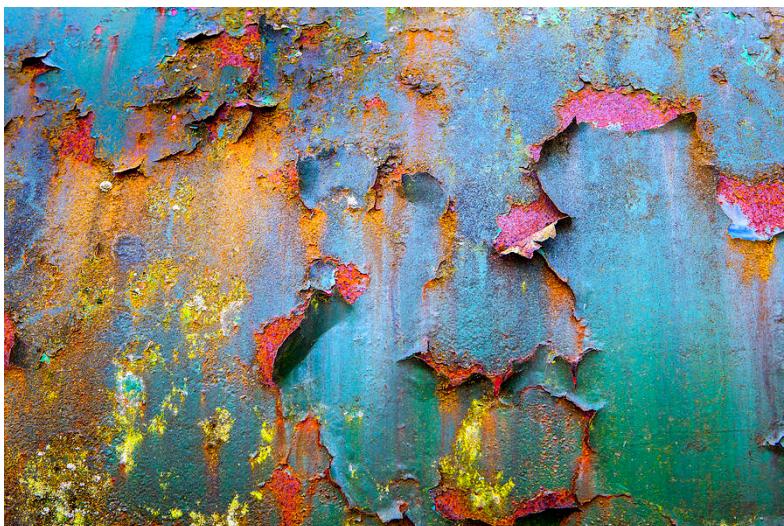
The aim of the challenge is to encourage the **analysis** of surface texture and for you to **replicate** as accurately as possible. You can use traditional art materials and other non-art materials to help you to achieve the surface texture you observe. The process could involve plaster/polyfilla, cardboard, string, foil, fabrics, sand, grit... You must **experiment with mark-making**, applying paint over the textures created.

Eventually, the photo will be displayed on the left-hand side of the sketchbook and the experimental mark-making on the opposite page for comparison.

Experimentation with new materials will open up lots of possibilities for future illustration increasing knowledge. Exploring unfamiliar materials and sampling new techniques will increase your confidence, in preparation for two or three-dimensional work.

Create enough experimental pieces to fill a sketchbook.

Mrs Sabery



Peeling paint and rusted surfaces- corrosion



Tree Bark, Lichen

Weathered posters



PHOTO 2 - bike machinery

I decided to use this photo as the main-made structure of the bike interested me and immediately made me question what materials could be used to replicate it.



For this piece of work, I used tinfoil to achieve the metal effect on the bike, folding it into particular shapes and using cardboard to raise certain areas slightly. I also used peacings to these indentations on the tinfoil to focus on depth. Finally, I added dotwork to achieve a more detailed finish for the background, to combine craft & collage.



PHOTO 3 - peeling / mouldy brick wall.

This photo instantly caught my attention due to the extreme range of colours and deterioration to the bricks, which made me want to replicate through paint and materials.



I am pleased with this work as the use of acrylic paint and a sponge has created the worn away feel of the bricks. In order to achieve definition of the bricks I used thin cardboard to raise them / create texture and a roll of paper to create the same panel above the 2nd row of bricks.



PHOTO 5 - KEYS

I chose to do this photo as the closeness of the layered keys created a lifted texture and surface just in the image making me want to replicate it.



For this piece, I used different cardboard and newspaper on high and low levels, for texture and did not work for detail. I also included plastic wire for the securing, although they did not turn out how I wanted. I would have liked to use wire, but it didn't turn out.



PHOTO 10-Step Ladder.
I chose to use this image as I wanted to
use corrugated card to ~~copy~~ the ridges.



I do not like this as I could not
achieve the right acrylic paint colouring.
The corrugated card achieved the same effect
however the image and drawing is not the same.



PHOTO 4 - seaweed

I chose to use this image as the significant texture of the seaweed almost seemed to be coming out of the page, making me intrigued on how I could achieve the same effect



For this piece, I used a mixture of brown and yellow acrylic paint on cut-up strips of paper and brown strings to achieve the compact effect of the background seaweed. I used watercolour and pencil on cardboard to make the main seaweed the focus of the piece, also using white acrylic for detail. For the pump, I used PVA glue on coiled string to raise the piece, then sticking down with hot glue and acrylic paint varnish.



PHOTO 9- Tree Bark.

I chose to replicate this image as the extreme ridges intrigued me on how I could achieve the same effect.



I used corrugated card and acrylic paint to achieve this in order to create the textured ridges within the bark.

