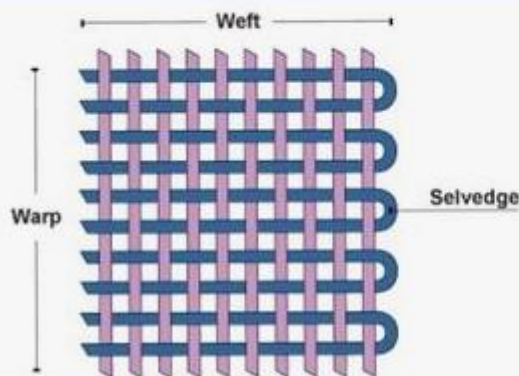


Weaves

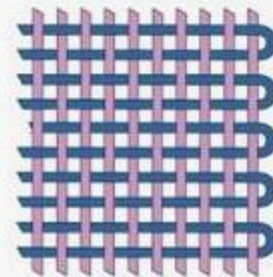
MOST FABRICS ARE MADE BY WEAVING OR KNITTING YARNS, ALTHOUGH NON-WOVEN FABRICS ARE MADE BY BONDING OR FELTING FIBRES TOGETHER. A FABRIC'S APPEARANCE, PROPERTIES AND END USE CAN BE AFFECTED BY THE WAY IT WAS CONSTRUCTED.

WOVEN FABRICS ARE MADE UP OF A WEFT - THE YARN GOING ACROSS THE WIDTH OF THE FABRIC - AND A WARP - THE YARN GOING DOWN THE LENGTH OF THE LOOM. THE SIDE OF THE FABRIC WHERE THE WEFTS ARE DOUBLE-BACKED TO FORM A NON-FRAYING EDGE IS CALLED THE SELVEDGE.



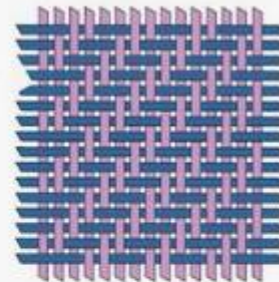
IN PLAIN-WEAVE FABRIC THE WARP AND WEFT ARE ALIGNED SO THAT THEY FORM A SIMPLE CRISS-CROSS PATTERN. PLAIN-WEAVE IS STRONG AND HARDWEARING, SO IT'S USED FOR FASHION AND FURNISHING FABRICS.

Plain - Weave



IN TWILL-WEAVE FABRIC THE CROSSINGS OF WEFT AND WARP ARE OFFSET TO GIVE A DIAGONAL PATTERN ON THE FABRIC SURFACE. IT'S STRONG, DRAPES WELL AND IS USED FOR JEANS, JACKETS AND CURTAINS.

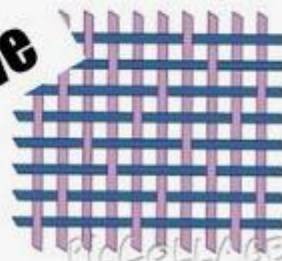
Twill - Weave



IN SATIN-WEAVE FABRIC THERE IS A COMPLEX ARRANGEMENT OF WARP AND WEFT THREADS, WHICH ALLOWS LONGER FLOAT THREADS EITHER ACROSS THE WARP OR THE WEFT. THE LONG FLOATS MEAN THE LIGHT FALLING ON THE YARN DOESN'T SCATTER AND BREAK UP, LIKE ON A PLAIN-WEAVE.

THE REFLECTED LIGHT CREATES A SMOOTH, LUSTROUS (SHINY) SURFACE COMMONLY CALLED SATIN. THE REVERSE SIDE IS INVARIABLY DULL AND NON-SHINY. WEAVE VARIATIONS INCLUDE JACQUARD AND DAMASK.

Satin - Weave



Wash Care codes



Natural fibres -properties

Natural fibre from an animal

Wool

USED FOR JUMPERS, SUITS AND BLANKETS AND HAS THE FOLLOWING QUALITIES:

- WARM TO WEAR
- ABSORBENT, DRIES SLOWLY
- BREATHABLE, REPELS RAIN
- SOFT OR COARSE HANDLE
- CAN SHRINK, SHOULD BE DRY CLEANED
- GOOD DRAPE
- NOT DURABLE
- CREASES DROP OUT



Natural fibre from an animal

Silk

USED FOR EVENING WEAR AND TIES AND HAS THE FOLLOWING QUALITIES:

- WARM TO WEAR
- ABSORBENT
- SOFT HANDLE
- GOOD LUSTRE AND DRAPE
- DURABLE
- CREASES DROP OUT
- DRY CLEAN



Natural fibre from an animal

Mohair

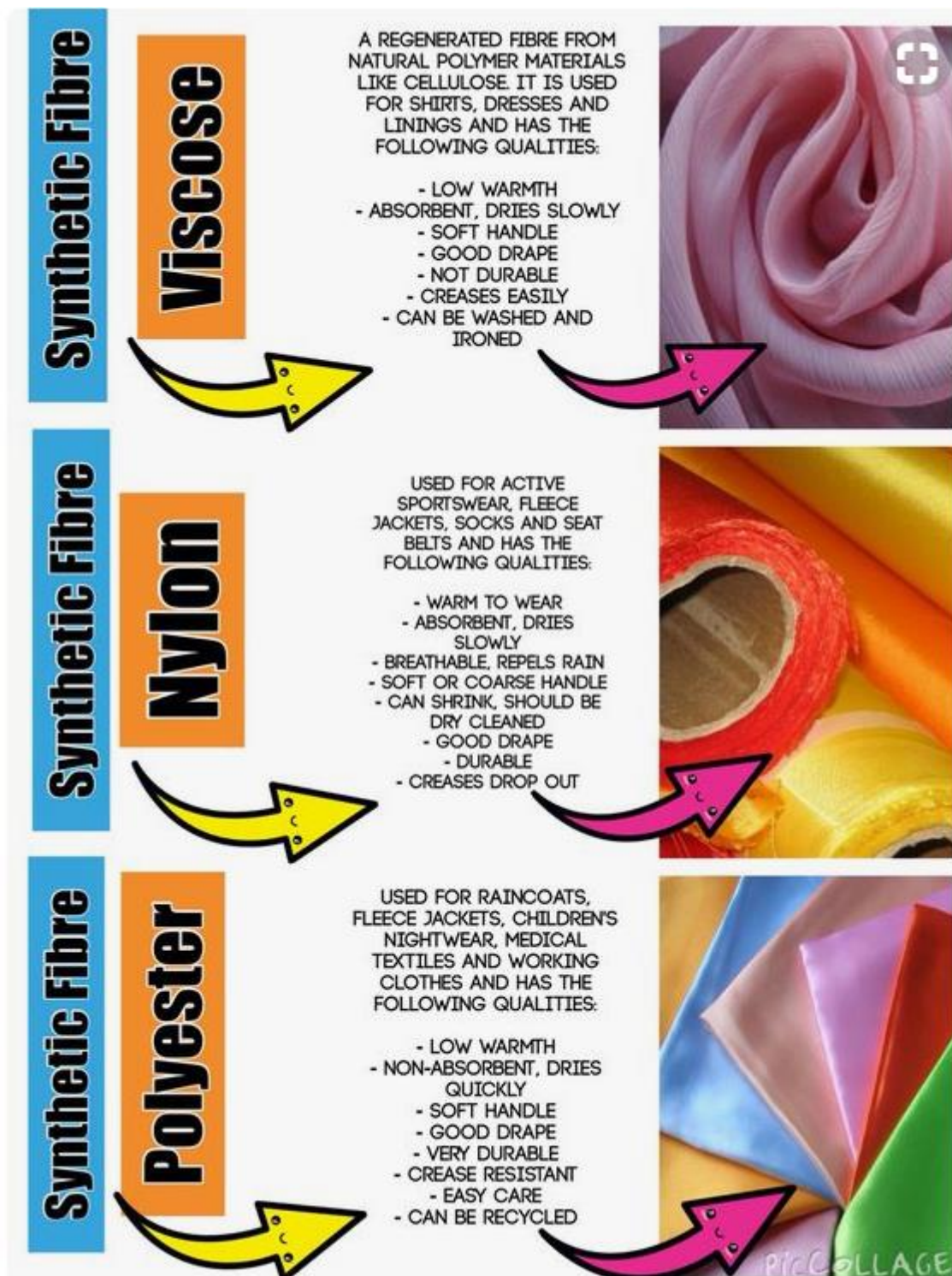
MOHAIR COMES FROM THE ANGORA GOAT

- MOHAIR DYES BEAUTIFULLY
- IT CAN BE BLENDED WITH WOOL
- THE OLDER THE ANIMAL, THE COARSER THE FIBRE, BUT OLDER MOHAIR IS SO HARD WEARING THAT IT IS IDEAL FOR FLOOR RUGS
- FIBRE FROM YOUNGER ANIMALS IS EXCELLENT FOR SOCKS

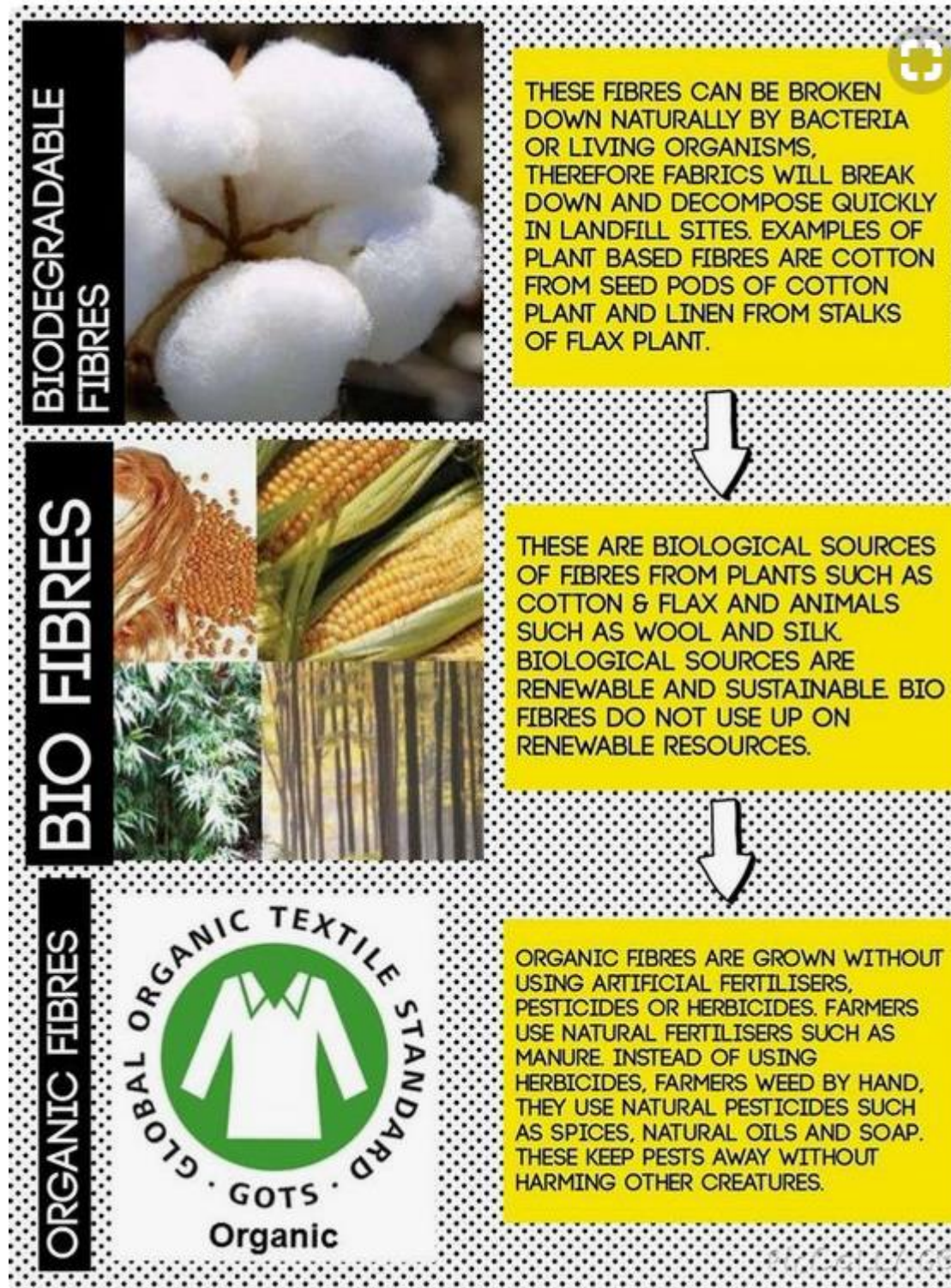


PicCOLLAGE

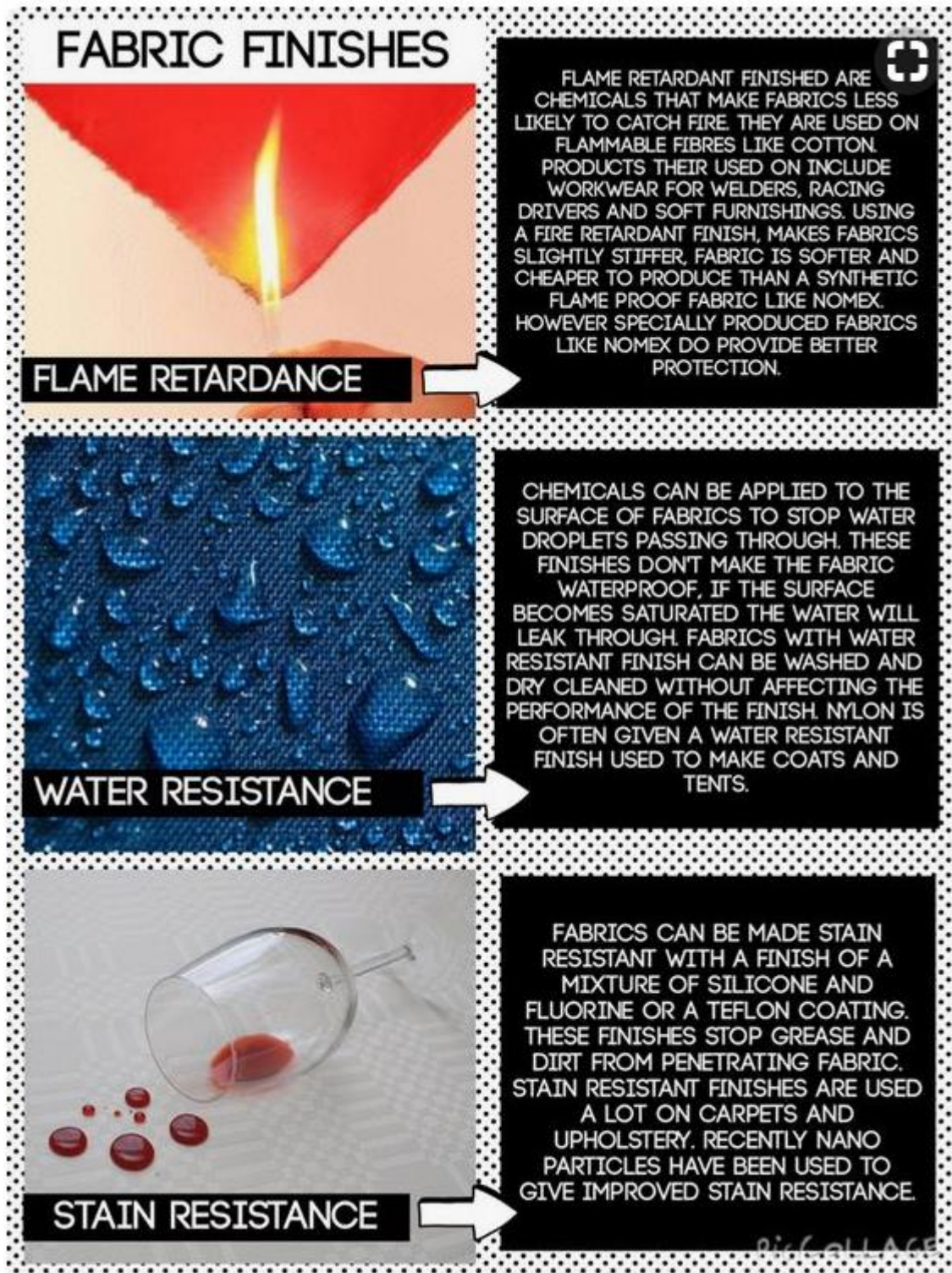
Manmade fibre – properties



Bio degradable fibres – environmentally friendly



Fabric finishes



Decorative techniques – learn the method



Labelling

Textile products maintenance

A CARE LABEL ON A TEXTILE PRODUCT GIVES THE CONSUMER USEFUL INFORMATION ABOUT PRODUCT MAINTENANCE. GOOD LABELS PROVIDE DETAILS ON:

Fibre content

WHICH IS THE PERCENTAGE OF EACH FIBRE USED TO MAKE A FABRIC, EG 50 PERCENT COTTON, 50 PERCENT POLYESTER. THIS IS A LEGAL REQUIREMENT.



Flammability

THIS IS A LEGAL REQUIREMENT FOR CHILDREN'S NIGHTWEAR.



Standard care symbols

STANDARD SIZE, WHICH IS A STANDARD MEASUREMENT OF THE HUMAN BODY. FOR EXAMPLE, WOMEN'S CLOTHES MIGHT COME IN SIZES 10, 12, 14, 16.



ALL MANUFACTURERS USE SIMILAR SYMBOLS TO TELL THE CONSUMER HOW TO LOOK AFTER THE PRODUCT; THE CARE OF TEXTILE PRODUCTS DEPENDS ON THE FIBRE CONTENT AND FABRIC FINISHES USED.

Satin Weave



SATIN WEAVE

Warp

Weft

In satin-weave fabric there is a complex arrangement of warp and weft threads, which allows longer float threads either across the warp or the weft. The long floats mean the light falling on the yarn doesn't scatter and break up, like on a plain-weave. The reflected light creates a smooth, lustrous (shiny) surface commonly called satin. The reverse side is invariably dull and non-shiny. Weave variations include jacquard and damask.

- The main characteristics of satin weave is that; the face side of the fabric is very smooth and glossy.
- Only one interlacement is happened between each warp and each weft, for this reason, it is very glossy.
-
- In satin weave, no twill direction is formed on the fabric surface.
- Satin weave is comparatively looser structure than plain and twill weave.
- Satin weave is mostly used for lace production.

PicCollAGE

Non woven fabrics

