



contact

lift

fall & catch

touch

pull/push

counterbalance

ledges

trust

strength

contemporary

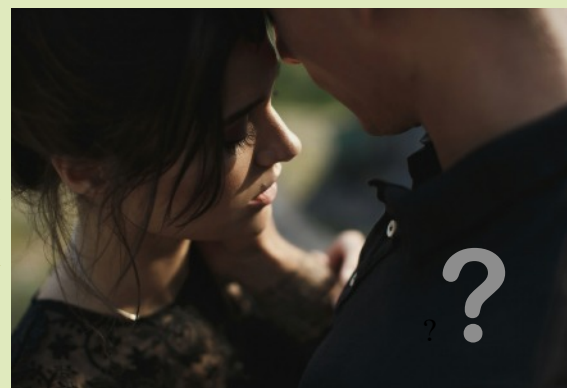
movement
style

In all sections

man supports

woman stays in the air

weight bearing, weight
giving, weight sharing



stimulus

A LOVE STORY WITH
A TWIST

accompaniment supports stimulus

electronic

soundscape

echoing piano

wind sounds

trembling
strings

slow tempo



violins build
intensity

creates change
in mood

climax

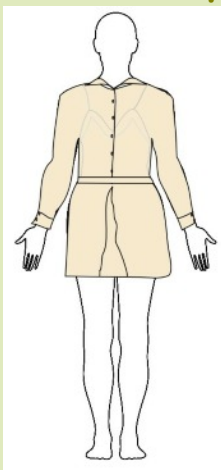
builds tension

aural
setting

motif &
variation

costume

colours support character



woman in
light colours:
cream/beige

thigh length
skirt with
central
pleat

sheer long
sleeved
blouse with
buttoned up
collar

bare feet



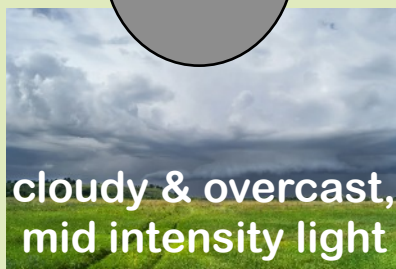
man in dark
colours:
greys, black

chino
trousers

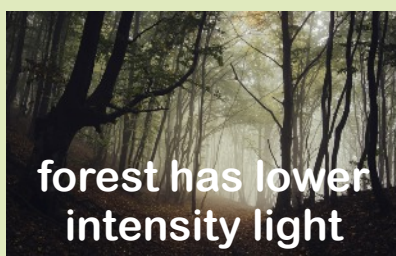
long
sleeved top

black shoes

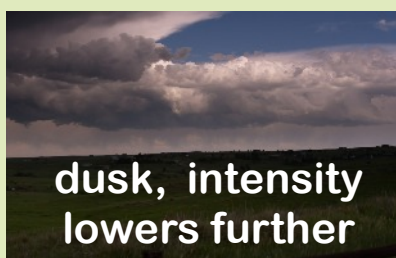
lighting



cloudy & overcast,
mid intensity light



forest has lower
intensity light



dusk, intensity
lowers further

night falls,
very little light
at the end

set



wide open field, long grass



cliff top



forest



quarry

+ deserted street. cemetery.

site sensitive

starts open and wide and
closes in as the dance
progresses

WITHIN HER EYES

JAMES COUSINS

Choreographic
intent

the pull from the
past conflicting
with a love in
the future

an ill fated love story