

a fusion of contemporary and ballet

traditional gender roles

curve, tilt, arch, contract

Graham technique

rapid violins

slow meditative tempo

minimalist

Eastern European composer

violin & piano

minor key

'tintinnabulation' (bell like chimes)

tension



movement style

ballroom/1940s social dance influences (mother/father duet)

set incorporated into action

gesture

contact



stimulus

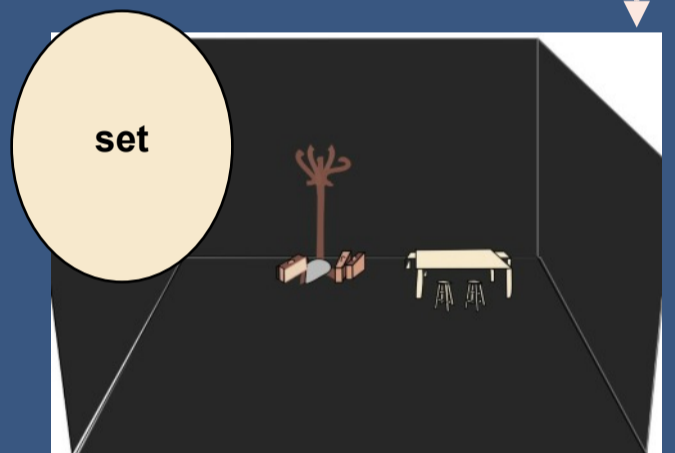
aural setting

accompaniment is stimulus

family relationships in the midst of the fear of outside persecution

location

SHADOWS  
CHRISTOPHER BRUCE



set

black box

pine kitchen table

bench

2 stools

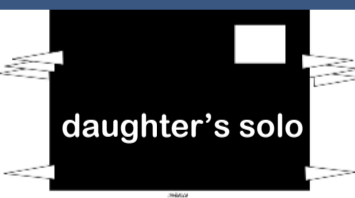
hat stand with coats

3 suitcases & 1 bundle

luggage is significant & supports narrative, stimulus & choreographic intent

furniture supports idea of home and family

lighting

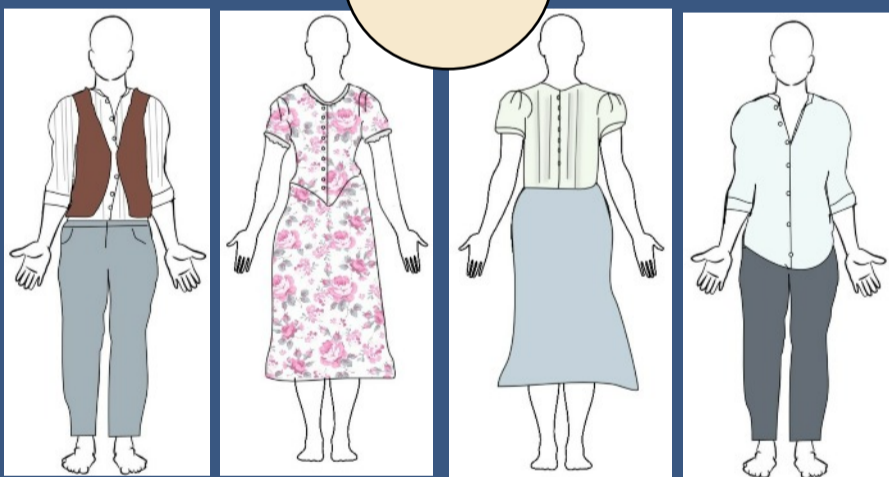


white side lighting throughout

lighting creates tension & mystery

shows character and era

costume



father

mother

daughter

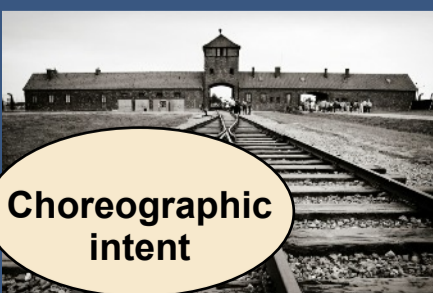
son

1940s Eastern European in style

blue/grey trousers pink/grey/white floral dress

collarless shirts with sleeves rolled up blue/grey skirt bare feet waistcoat

pastel blouse lightweight fabrics



Choreographic intent

open to interpretation but influenced by....

Nazi or Russian occupation of Eastern Europe in WW2

A family waiting to be transported to a concentration camp